

Bonhams



**Modern Decorative
Art + Design**

New York | December 13, 2019



Modern Decorative Art + Design

New York | Friday, December 13 2019 at 11am

BONHAMS

580 Madison Avenue
New York, New York 10022
bonhams.com

PREVIEW

New York

Saturday December 7
11am to 5pm
Sunday December 8
11am to 5pm
Monday December 9
10am to 5pm
Tuesday December 10
10am to 5pm
Wednesday December 11
10am to 5pm
Thursday December 12
10am to 5pm

SALE NUMBER: 25459
Lots 1 - 155

CATALOG: \$50

LOT SYMBOLS

W - Oversized lots
Y - CITES

AUCTIONEER

Matthew Girling - 1236798-DCA

Bonhams & Butterfields
Auctioneers Corp.
2077070-DCA

BIDS

+1 (212) 644 9001
+1 (212) 644 9009 fax

To bid via the internet please visit
www.bonhams.com/25459

Please note that telephone bids must be submitted no later than 4pm on the day prior to the auction. New bidders must also provide proof of identity and address when submitting bids. Telephone bidding is only available for lots with a low estimate in excess of \$1,000.

Please contact client services with any bidding inquiries.

Please see pages 151 to 155 for bidder information including Conditions of Sale, after-sale collection and shipment.

INQUIRIES

New York

Benjamin Walker
Global Head of Department
+1 (212) 710 1306
benjamin.walker@bonhams.com

Dan Tolson
International Director
+1 (917) 206 1611
dan.tolson@bonhams.com

Misha Sylver
Administrator
+1 (917) 206 1614
misha.sylver@bonhams.com

Los Angeles

Jason Stein
Director
jason.stein@bonhams.com
+1 (323) 436 5466

David Trujillo
Specialist
+1 (323) 436 5405
david.trujillo@bonhams.com

Katherine Miller
Administrator
+1 (323) 436 5445
katherine.miller@bonhams.com

ILLUSTRATIONS

Front cover: Lot 142
Inside front cover: Lot 67
Opposite page: Lot 120
Inside back cover: Lot 118
Back cover: Lot 142

REGISTRATION IMPORTANT NOTICE

Please note that all customers, irrespective of any previous activity with Bonhams, are required to complete the Bidder Registration Form in advance of the sale. The form can be found at the back of every catalogue and on our website at www.bonhams.com and should be returned by email or post to the specialist department or to the bids department at bids.us@bonhams.com

To bid live online and / or leave internet bids please go to www.bonhams.com/auctions/25459 and click on the Register to bid link at the top left of the page.



Specialists for this auction

New York



Paris

Benjamin Walker
Global Head of Department

Dan Tolson
International Director

Catherine Yaiche
Director

Los Angeles



Milan

Jason Stein
Director

David Trujillo
Specialist

Luca Curradi
Specialist

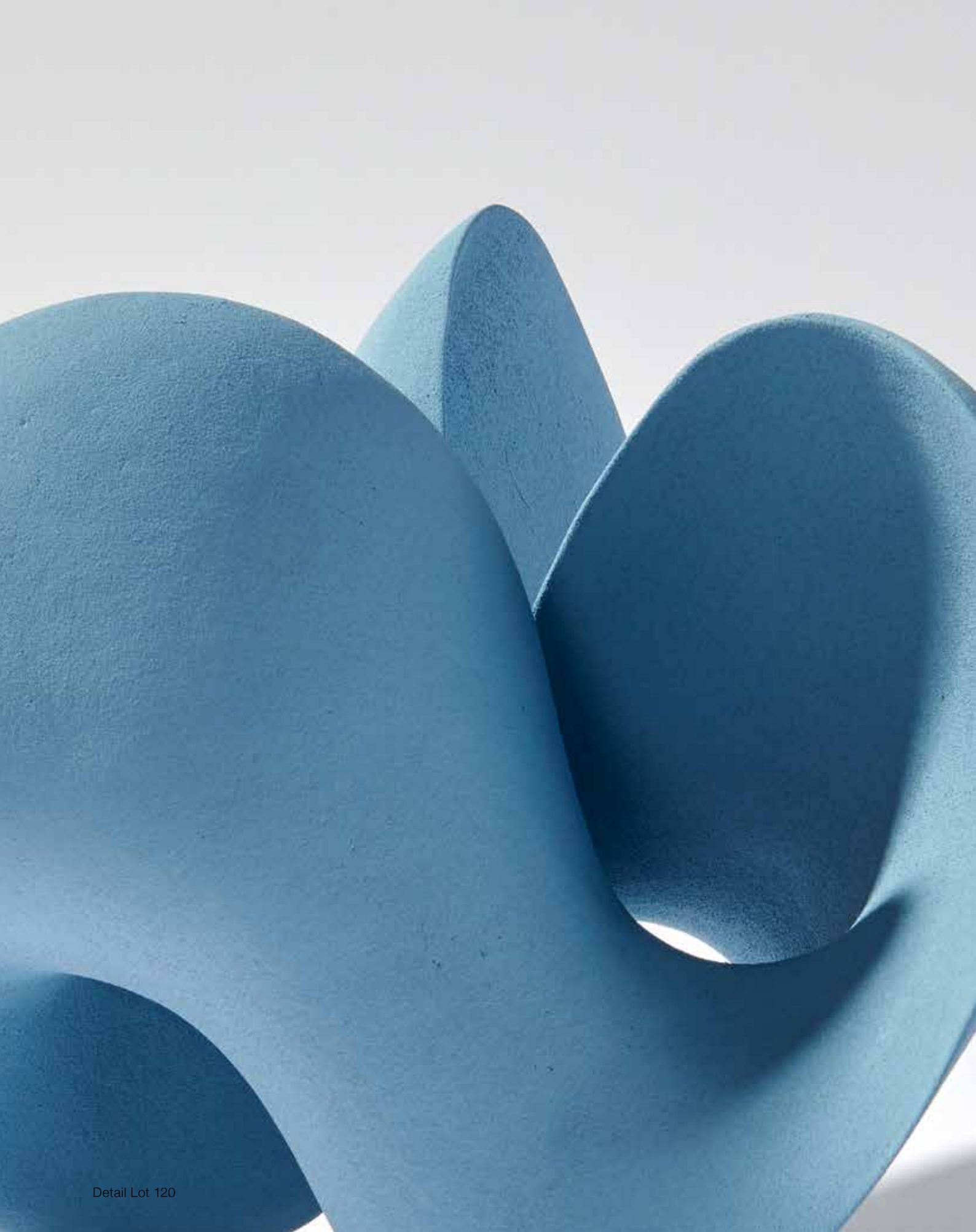
London



Mark Oliver
Department Director

Gemma Sanders
Head of Department

Duane Kahlhamer
Senior Specialist



1

KOLOMAN MOSER (1868-1918)

Sherry Jug

1899

for Meyr's Neffe, gilt metal, cased and wheel carved glass
height 9 1/2in (23cm); width 6 1/2in (16.5cm); depth 5in (13cm)

US\$3,000 - 5,000

Provenance

Private Collection, Iowa



2

WILLIAM DE MORGAN (1839-1917)

Charger

1888-98

model no. 3991, for Fulham Pottery, painted by Charles

Passenger, iridescent glazed ceramic, glaze mark

'FULHAM W.D.M. C.P. 24 2991'

height 2 3/4in (7cm); diameter 16 1/4in (41.5cm)

US\$4,000 - 6,000



3

JEAN MAYODON (1893-1967)

Rare Large Earthly Paradise Charger

circa 1935

stoneware with polychrome glaze and gilt highlights,

stamped with artist's monogram

height 3 3/4in (9.5cm); diameter 19in (48cm)

US\$4,000 - 6,000

Provenance

Private Collection, United Kingdom

Literature

Gérard Landrot, 'Mayodon', Argusvalinties, 2004, p. 223
(design illustrated)

2



3

4^W

JOSEF HOFFMANN (1870-1956)

Pair of Lounge Chairs

circa 1905

original silk upholstery, feet applied with hand hammered alpaca
each height 29 3/4in (75.5cm); width 30in (76cm); depth 31in (79cm)

US\$15,000 - 20,000

Provenance

'Wiener Werkstätte', Christie's, King Street, London

Private Collection, California, acquired from the above, 2001



5

FRANK LLOYD WRIGHT (1867-1959)

Dining Room Door Window Panel from the
Ward W. Willits House

1902

clear and polychrome leaded glass,

gold foil applied

height 70in (178cm); width 30in (76cm)

US\$25,000 - 35,000

Provenance

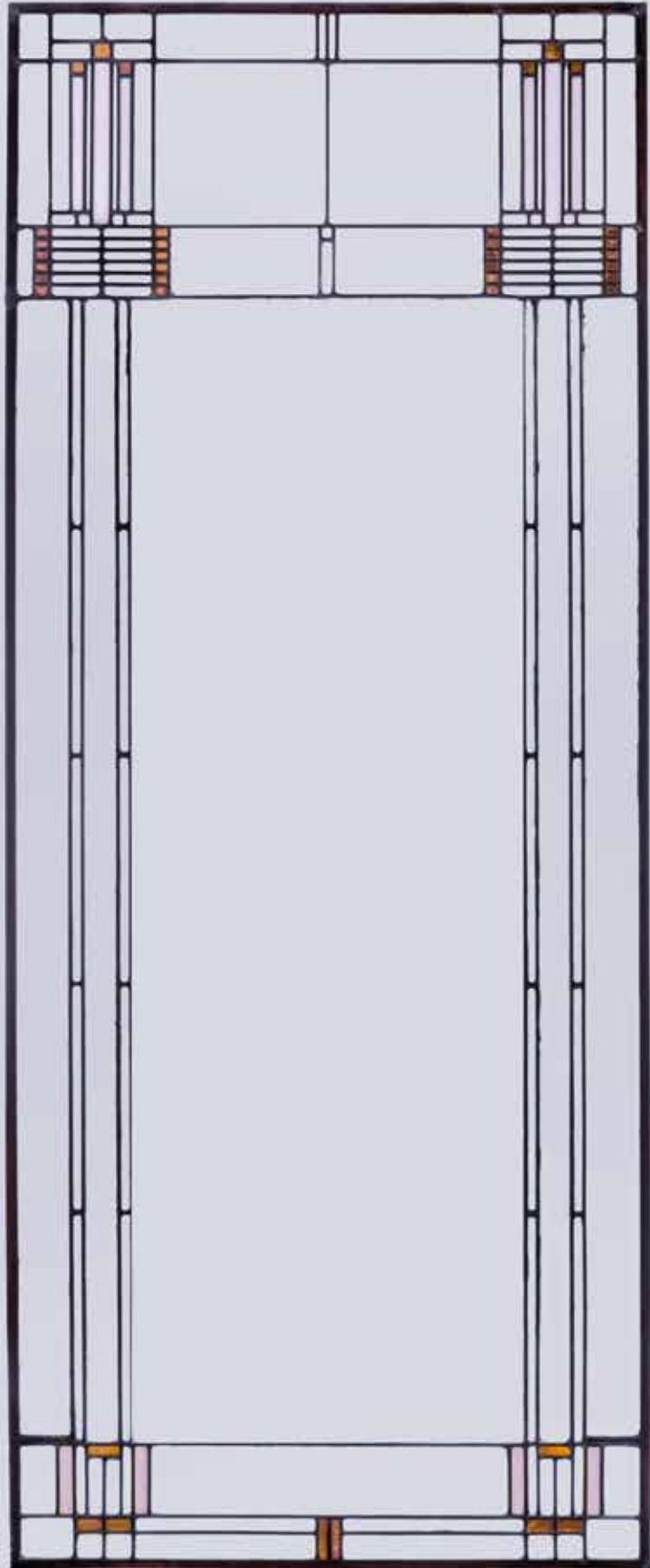
Ward W. Willits House, Highland Park, Illinois,

1902

Private Collection, Illinois

Literature

Thomas A. Heinz, 'Frank Lloyd Wright:
Interiors and Furniture', Academy Editions,
1994, p. 71-72 (dining room windows
illustrated)



6

EMILE GALLÉ (1846-1904)

Scent Bottle

circa 1890

internally decorated and with gold foil, applied and carved stopper, body

carved 'e Gallé'

height 3 3/8in (8.5cm)

US\$4,000 - 6,000

Provenance

'20th Century Art Nouveau', Sotheby's, New York, June 7, 2002, lot 174



7

EMILE GALLÉ (1846-1904)

Rare La Mer Vase

circa 1900

dichroic glass, mottled and internally decorated with silver foil, acid etched surface decoration of seaweed, the surface applied and carved, acid etched 'Gallé', underside engraved '28'
height 4 3/4in (12cm); width 4 1/2in (11.5cm); depth 4 3/4in (12cm)

US\$40,000 - 60,000

Provenance

Areta and Jeffrey Kaufman
Jean-Claude Brugnot, Paris

Literature

Philippe Garner, 'Emile Gallé', Academy Editions, 1984, p. 133
(model variant illustrated)



8

ERNEST BUSSIÈRE (1863-1913)

Horse Chestnut Vase

circa 1900

for Keller et Guerin, white earthenware with polychrome glaze, glaze

mark 'K.G.Luneville Bussière'

height 18in (45.7cm); diameter 16in (40.6cm)

US\$6,000 - 8,000



9

DAUM FRÈRES (FOUNDED 1878)

Libellules et Nénuphars Vase

circa 1900

internally decorated, overlaid with vitrified and acid-etched waterlilies and dragonflies, each dragonfly applied and wheel carved, cameo mark 'DAUM NANCY' with the Cross of Lorraine
height 9 1/4in (23.5cm); diameter 6in (15cm)

US\$25,000 - 35,000

Provenance

Private Collection, Paris, acquired circa 1920

Thence by descent



10

TIFFANY STUDIOS (1899-1930)

Rare Vase

1898-1903

enameled copper, stamped 'SG97 LCT'

height 8in (20.3cm); diameter 3in (7.62cm)

US\$20,000 - 30,000



11

TIFFANY STUDIOS (1899-1930)

Early Tulip Table Lamp

1902-03

leaded glass, patinated bronze, shade with tag 'TIFFANY STUDIOS

NEW YORK', interior well of base stamped with cypher 'CDTCCO

TIFFANY STUDIOS NEW YORK 2121814'

height of base 16 1/4in (41.5cm); diameter of shade 16in (41cm)

US\$30,000 - 50,000

Provenance

Private Collection, California



12

TIFFANY STUDIOS (1899-1930)

Spider Table Lamp

circa 1905

on Tree Trunk base, patinated bronze, leaded glass, shade stamped

'TIFFANY STUDIOS NEW YORK 1450-1', base stamped 'TIFFANY

STUDIOS NEW YORK 554'

diameter 15 3/4in (40cm); height 21in (53.3cm)

US\$35,000 - 45,000



13

TIFFANY STUDIOS (1899-1930)

Early Dragonfly Table Lamp

1900-01

leaded glass, patinated bronze, blown glass, interior of base stamped
'25924'

height 24 1/2in (62cm); diameter of shade 20 1/2in (52cm)

US\$50,000 - 70,000



14

TIFFANY STUDIOS (1899-1930)

Rare Almander Table Lamp

circa 1915

patinated bronze, leaded glass, shade stamped 'TIFFANY STUDIOS

NEW YORK 1449', base stamped 'TIFFANY STUDIOS NEW YORK

589'

diameter 18in (45.7cm); height 21in (53.3cm)

US\$35,000 - 45,000



15

TIFFANY STUDIOS (1899-1930)

Dogwood Floor Lamp

circa 1915

leaded glass, patinated bronze, shade stamped 'TIFFANY STUDIOS NEW YORK', base stamped 'TIFFANY STUDIOS NEW YORK 38'

height 65in (165cm); diameter of shade 23in (58.5cm)

US\$100,000 - 150,000

Provenance

Private Collection, New York



(detail)



16

TIFFANY STUDIOS (1899-1930)

Daffodil Table Lamp

circa 1905

on Acorn Urn base, patinated bronze, leaded glass, shade stamped
'TIFFANY STUDIOS NEW YORK', base stamped 'TIFFANY STUDIOS
NEW YORK 30'

height 21in (53.3cm); diameter of shade 16in (40.6cm)

US\$25,000 - 35,000



17

TIFFANY STUDIOS (1899-1930)

Oriental Poppy Table Lamp

circa 1925

leaded glass, patinated bronze, shade with tag stamped 'TIFFANY STUDIOS N.Y. 1598', base stamped 'TIFFANY STUDIOS NEW YORK 395'

height 26in (66cm); diameter of shade 18in (46cm)

US\$100,000 - 150,000

Provenance

Private Collection, New York



18^W

PAUL T. FRANKL (1886-1958)

Pair of Skyscraper Bookcases

circa 1930

designed 1926, for Frankl Galleries, lacquered wood
each height 86 1/4in (219cm); width 39in (99cm); depth 11 3/4in
(30cm)

US\$25,000 - 35,000

Bonhams would like to thank Christopher Long for his assistance in the cataloguing of this lot.

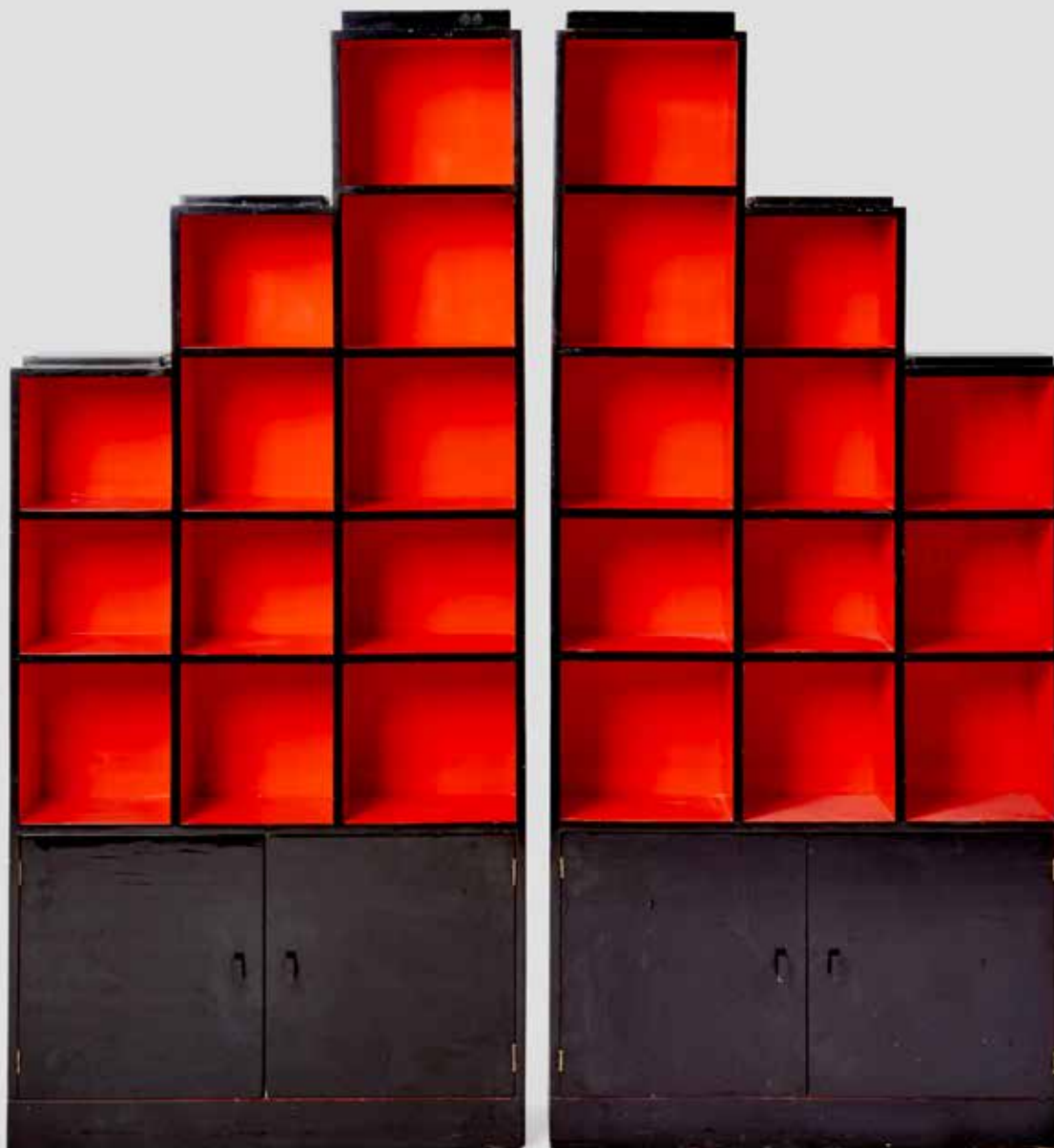
Provenance

Seymour Stein Collection, New York

Literature

Paul T. Frankl, 'New Dimensions', New York, 1928, p. 22-24 (for related models)

Christopher Long, 'Paul T. Frankl and Modern American Design', New Haven, 2007, pp. 67, 74



19^W

PAUL T. FRANKL (1886-1958)

Skyscraper Bookcase

circa 1930

designed 1926, for Frankl Galleries, lacquered wood

height 86 1/4in (219cm); width 39in (99cm);

depth 11 3/4in (30cm)

US\$15,000 - 20,000

This grouping is an exceptionally fine and rare example of Paul T. Frankl's 'Skyscraper' bookcase designs, here as an ensemble intended for a private library. Frankl made his first Skyscraper bookcase in the summer of 1925 at his cabin in Woodstock, New York. He began retailing them at his gallery at 4 E. 48th Street in Manhattan in late 1925 or early 1926. His first models were stand-alone pieces, with squat bases and soaring towers, very much like the tall 'setback' buildings in New York of that era. These three pieces, which almost certainly represent a custom commission, were likely made in 1927 or 1928, when the popularity of Frankl's Skyscraper furniture was at its height. The black and red lacquer scheme was one of Frankl's favorites, and he used it for a number of his designs in this period. A similar single 'tower,' in black lacquer with silver trim, is in the collection of The Art Institute of Chicago.

Christopher Long

Martin S. Kermacy Centennial Professor

University of Texas at Austin

Provenance

Seymour Stein Collection, New York

Literature

Paul T. Frankl, 'New Dimensions', New York, 1928, p. 22-24 (for related models)

Christopher Long, 'Paul T. Frankl and Modern American Design', New Haven, 2007, p. 67, 74





20^W

JACQUES ADNET (1901-1984)

Bespoke Chandelier

1954

for Compagnie des Arts Français, leather, brass, glass

height 39 1/2in (100cm); diameter 51 1/4in (130cm)

US\$35,000 - 45,000

The present lot is one of two ceiling lights that was conceived and executed as part of the interior scheme designed by Jacques Adnet for the Palais des Consuls, Rouen. André Arbus also participated in the design of interior elements.

Provenance

Palais des Consuls, Rouen, 1954

Private Collection, Paris

Literature

Alain-René Hardy, Gaëlle Millet, 'Jacques Adnet', Les Editions de l'Amateur', 2014, p. 145 (present lot illustrated), p. 146 (design drawing illustrated)



21^W

JACQUES ADNET (1901-1984)

Bespoke Chandelier
1954

for Compagnie des Arts Français, leather, brass, glass
height 39 1/2in (100cm); diameter 51 1/4in (130cm)

US\$35,000 - 45,000

The present lot is one of two ceiling lights that was conceived and executed as part of the interior scheme designed by Jacques Adnet for the Palais des Consuls, Rouen. André Arbus also participated in the design of interior elements.

Provenance

Palais des Consuls, Rouen, 1954
Private Collection, Paris

Literature

Alain-René Hardy, Gaëlle Millet, 'Jacques Adnet', Les Editions de l'Amateur', 2014, p. 145 (present lot illustrated), 146 (design drawing illustrated)

22^W

ODETTE CHATROUSSE-HEILIGENSTIEN (1896-1989)

Monumental Vase

circa 1925

ceramic with polychrome glazes, gilt bronze mounts, signed with monogram 'OHC'

height 55in (134.6cm); diameter 22in (56cm)

US\$8,000 - 12,000



23

COLLI TORINO; ATTRIBUTED

Pair of Wall Lights

1964-65

for Cristal Art Torino, float glass with battuto surface, acid frosted glass, brass

height 12in (30.5cm); width 6 1/2in (16.5cm)

US\$5,000 - 7,000

Provenance

Private Collection, France



23

24^W

MAISON JANSEN (FOUNDED 1880)

Pair of Console Tables

circa 1940

sycamore

height 34 1/4in (87cm); width 47in (119.5cm); depth 14 3/4in (37.5cm)

US\$15,000 - 20,000

Designed and executed for the home of Jack Warner, Villa Aujourd'hui, Cap D'Antibes, 1938.

Provenance

Galerie Chastel Marechal, Paris

Barry Friedman, New York

Private Collection, Dallas, Texas



24



25

RENÉ LALIQUE (1860-1945)

Rare Cluny Vase

circa 1925

model introduced 1925, Marcilhac no. 961, patinated bronze handles,
smokey grey blown glass

height 10 1/4in (26cm)

US\$30,000 - 40,000

Provenance

René Lalique (1860-1945)

Thence by descent



26

PIETRO CHIESA (1892-1948)

Table Lamp

circa 1935

for Fontana Arte, wheel cut glass, brass, enameled brass

height 9 3/4in (24.5cm); width 4 3/4in (12.5cm); depth 2 1/2in (6.5cm)

US\$4,000 - 6,000

Provenance

Private Collection, Milan



27

PIETRO CHIESA (1892-1948)

Table Lamp

circa 1940

for Fontana Arte, acid frosted glass, brass

height 8in (20.5cm); width 4 1/2in (11.5cm); depth 2 1/2in (6.5cm)

US\$4,000 - 6,000

Provenance

Private Collection, Milan

Literature

Franco Deboni, 'Fontana Arte: Gio Ponti, Pietro Chiesa, Max Ingrand',
Allemandi & C., 2012, fig. 80



27

28

PIETRO CHIESA (1892-1948); AFTER

Table Lamp

circa 1940

for Fontana Arte, cut and etched glass, brass

height 8 1/4in (21cm); width 4 1/2in (11.5cm); depth 3in (7.5cm)

US\$2,000 - 3,000

Provenance

Private Collection, Milan

Literature

Franco Deboni, 'Fontana Arte: Gio Ponti, Pietro Chiesa, Max Ingrand',
Allemandi & C., 2012, fig. 80



28

29

NAPOLEONE MARTINUZZI (1892-1977); AFTER

Two Flower Sticks

circa 1950

iron rods, applied with lamp worked iridescent glass
lengths 33 3/4in (85.5cm) and 31in (79cm)

Provenance

Private Collection, Milan

US\$3,000 - 5,000



30^W

LUCIANO FRIGERIO (1928-1999)

Desirée Cabinet

circa 1965

for Frigerio di Desio, macassar ebony, patinated
bronze

*height 57in (145cm); width 55in (140cm); depth
21in (53cm)*

US\$4,000 - 6,000

Provenance

Private Collection, New York



31
PIETRO CHIESA (1892-1948)

Rare Pair of Table Lamps
circa 1935
for Fontana Arte, frosted glass, brass, enameled brass
height 13 1/4in (33.5cm); width 10 1/4in (26cm); depth 5 1/4in (13cm)

US\$5,000 - 7,000

Provenance

Private Collection, Milan

32
ANGELO LELII (1911-1979)

Pair of Wall Lamps
1956
for Arredoluce, brass, acid frosted glass
height 11in (28cm); width 13 1/4in (34cm); depth 7 1/2in (19cm)

US\$2,000 - 3,000

Provenance

Private Collection, Milan

Literature

Anty Pansera, Alessandro Padoan, Alessandro Palmaghini, 'Arredoluce Catalogo Ragionato 1943-1987, Catalogue Raisonné', Silvana Editoriale, 2018, no. 131, p. 302

33^W
RENZO ZAVANELLA (1900-1988)

Armchair
circa 1950
silk upholstery, walnut
height 44 1/4in (112.3cm); width 34 1/2in (87.6cm); depth 30 1/4in (76.8cm)

US\$8,000 - 12,000

Designed and executed for Hotel San Remo, Rome, 1945

Provenance

Private Collection, Los Angeles

Literature

Anne Bony, 'Esempi di Arredamento: Sale di Soggiorno Camini', Aloi, fig. 87 (model illustrated)



31





32



33

34

LUIGI CACCIA DOMINIONI (1913-2016)

Sasso Adjustable Table Lamp

circa 1950

model no. Lta. 1, for Azucena, brass, polished river stone, enameled

aluminum

height 16 1/2in (42cm)

US\$7,000 - 10,000

Provenance

Private Collection, Milan

Literature

Giuliana Gramigna, 'Repertorio del Design Italiano 1950-1980, Vol. 1',
Umberto Allemandi, 2006, p. 22



35

GIOVANNI GARIBOLDI (1908-1971)

Rare Vase

designed circa 1950, executed 1953

for Richard Ginori, glazed stoneware, gilt, San Cristoforo glaze mark
'RICHARD GINORI MADE IN ITALY 11-53-2'

height 8 1/4in (21cm)

US\$2,000 - 3,000

Provenance

Private Collection, New York

Literature

Michael Marelli, 'Nato con la Matita' AD Antiques & Collectors #11, Conde Nast, 2004, p. 100 (watercolor depicting model variants)
Emanuele Gaudenzi, 'Novecento Ceramiche Italiane Vol. 2', Faenza Editrice, 2006, p. 126, fig. 221, 224 (model variants illustrated)
Ciacinta Cavana Di Gualdana, 'Gariboldi', Corraini Edizione, 2010, p. 68 (model variants illustrated)

36

GIOVANNI GARIBOLDI (1908-1971)

Rare Vase

designed 1940, executed 1952

model no. 7009, for Richard Ginori, glazed stoneware, San Cristoforo glaze mark 'RICHARD GINORI MADE IN ITALY 8-52-1' and stamped '7009'

height 15in (38cm)

US\$3,000 - 5,000

Provenance

Private Collection, New York

Literature

'Libero Di Casa', Editoriale Domus, Milano, 1941, p. 54 (model illustrated)



35



36

37^W

ANGELO LELII (1911-1979)

Three Arm Ceiling Light

1961

for Arredoluce, brass, frosted glass

height 8 1/2in (21.5cm); width 53in (135cm); depth 25in (63.5cm)

US\$8,000 - 12,000

Provenance

Private Collection, Milan

Literature

Anty Pansera, Alessandro Padoan, Alessandro Palmaghini, 'Arredoluce Catalogo Ragionato 1943-1987, Catalogue Raisonné', Silvana Editoriale, 2018, no. 368, p. 342



38^W

CARLO DE CARLI (1910-1999)

Rare Pair of Armchairs

circa 1955

model no. 806, for Cassina, mahogany, upholstery

height 33in (84cm); width 23 1/2in (60cm); depth 24in (61cm)

US\$6,000 - 8,000

Provenance

Rotary Club, Varese, Italy

Private Collection, New York

Literature

Gampiero Bosoni, 'Made in Cassina', Skira, 2009, p. 165



39

OSCAR TORLASCO (1934-2004)

Pair of Adjustable Table Lamps

circa 1960

model no. 555, for Lumi di Milano, enameled aluminum, brass, magnifying glass diffuser, manufacturer's label
height 14 3/4in (37cm); shade diameter 15in (38cm)

US\$4,000 - 6,000

Provenance

'Modern Design', Christie's, South Kensington, London
Private Collection, New York, acquired from the above, circa 2010

Literature

Rivista dell' Arredamento # 97, Görlich Editore Milano, 1963, unpaginated (model illustrated)

40

FONTANA ARTE (FOUNDED 1932)

circa 1940

tinted glass, mirror plate, brass, acid-stencil mark 'FONTANA ARTE'
height 36in (90cm); width 19 1/4in (49cm)

US\$4,000 - 6,000

Literature

Franco Deboni, 'Fontana Arte: Gio Ponti, Pietro Chiesa, Max Ingrand', Allemandi & C., 2012, fig. 385, 433 (related later models by Max Ingrand)





40

41^W

GIO PONTI (1891-1979)

Wingback Chair

1953

model no. 408, for I.S.A., walnut, upholstery

height 44 1/2in (113cm); width 29 1/2in (74cm); depth 28 1/2in (72cm)

US\$5,000 - 7,000

Sold together with a certificate of expertise from the Gio Ponti Archives

Provenance

Private Collection, New York

Literature

'Casa e Turismo Arradamento', #3, Milan, 1955, unpaginated



41



42

GIANFRANCO FRATTINI (1926-2004)

Two Bottle Coasters

1964

sterling silver, each stamped '925' and 'M.Miracoli F'
height of larger example height 3 3/4in (9.5cm); diameter 8 1/2in (21.5cm)

US\$1,500 - 2,000

The present model was conceived and executed for the Saint Andrews Public House, Milan, 1964 and was not entered into production.

Provenance

Saint Andrews Public House, Milan, 1964
Private Collection, Milan



43

GIO PONTI (1891-1979)

Diamond Pattern Silver Flatware Service
designed 1958

for Reed and Barton, comprising of flatware for 12 place settings, including 12 table knives, 12 table forks, 24 lunch forks, 12 lunch knives, 12 dessert spoon, 12 tea spoons, 12 cocktail forks, 2 serving spoons, 1 cake server, 1 pickle fork, 100 pieces total, each piece stamped 'Reed & Barton Sterling', in a fitted mahogany canteen *canteen height 5 1/2in (14cm); width 15in (38cm); depth 11in (28cm)*

US\$6,000 - 8,000

Provenance

Private Collection, California

44^W

ALBERTO GAMBETTA

Rare Pair of Adjustable Armchairs

1957-60

for Luberto, nickel plated tubular brass, upholstery

height 35in (89cm); width 27in (69cm); depth 23in (58.5cm)

US\$6,000 - 8,000

Examples of this design were selected by Morris Lapidus for use in his own New York apartment, circa 1960 and were retailed by Luberto Design Inc. New York, from 1957-1960.

Alberto Gambetta was the owner and designer of Luberto, a new firm created from a merger of Casa Decor and Palazzo Trading Company in the Fall of 1955.

Provenance

Roberta Rida, Milan

Gallery 25, London

Private Collection, New York

Literature

Deborah Desilets, Morris Lapidus, 'The Architecture of Joy', Rizzoli, 2010, pp. 207, 208, 232 (related models illustrated)





45^W

MAX INGRAND (1908-1969)

Rare Organo Ceiling Light

circa 1965

model no. 2177, for Fontana Arte, nickel plated steel, facet cut glass
diffusers

height 43in (109cm); width 33 1/2in (85cm)

US\$20,000 - 30,000

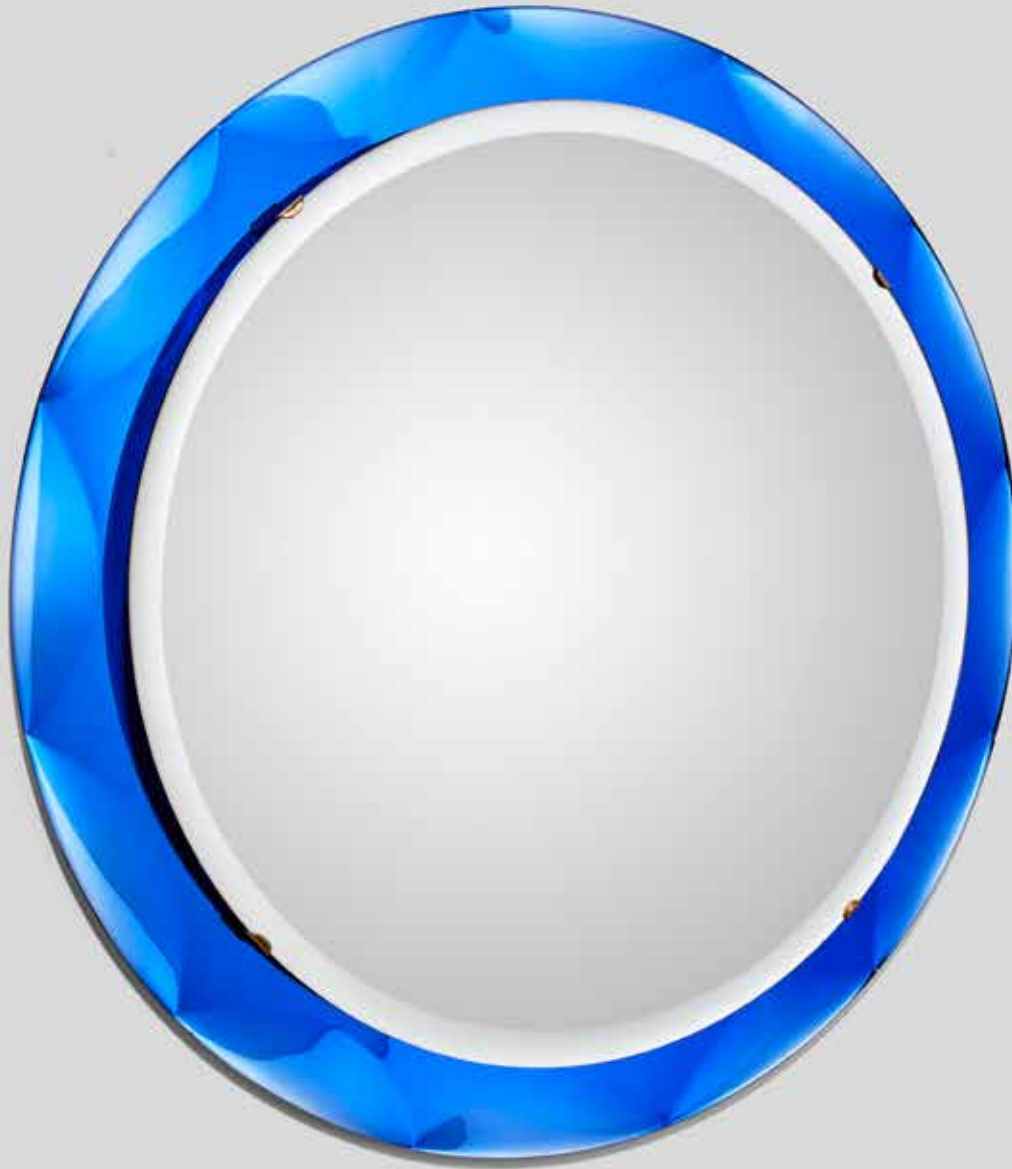
Provenance

Private Collection, New York

Literature

Pierre Emmanuel Martin-Vivier, Jacques Lacoste, 'Max Ingrand',
Norma Editions, 2009, p. 232

Franco Deboni, 'Fontana Arte: Gio Ponti, Pietro Chiesa, Max Ingrand',
Allemandi & C., 2012, p. 319



46

MAX INGRAND (1908-1969)

Wall Mirror

circa 1955

for Fontana Arte, mirror glass, with facet cut edges

diameter 28 1/4in (72cm)

US\$8,000 - 12,000

Provenance

Private Collection, Milan



47^W

MAX INGRAND (1908-1969)

Ceiling Light

circa 1960

for Fontana Arte, acid frosted and tinted glass, brass

height 25in (63cm); diameter 35 1/2in (90cm)

US\$15,000 - 20,000

Provenance

Private Collection, Milan



48

48
DUILIO DUBÉ BARNABE (1914-1961)

Plaque
 circa 1955
 for Fontana Arte, reverse painted glass,
 painted mark "DUBE*FONTANA ARTE*"
 height 1in (3cm); width 29in (73.5cm); depth
 25 1/2in (65cm)

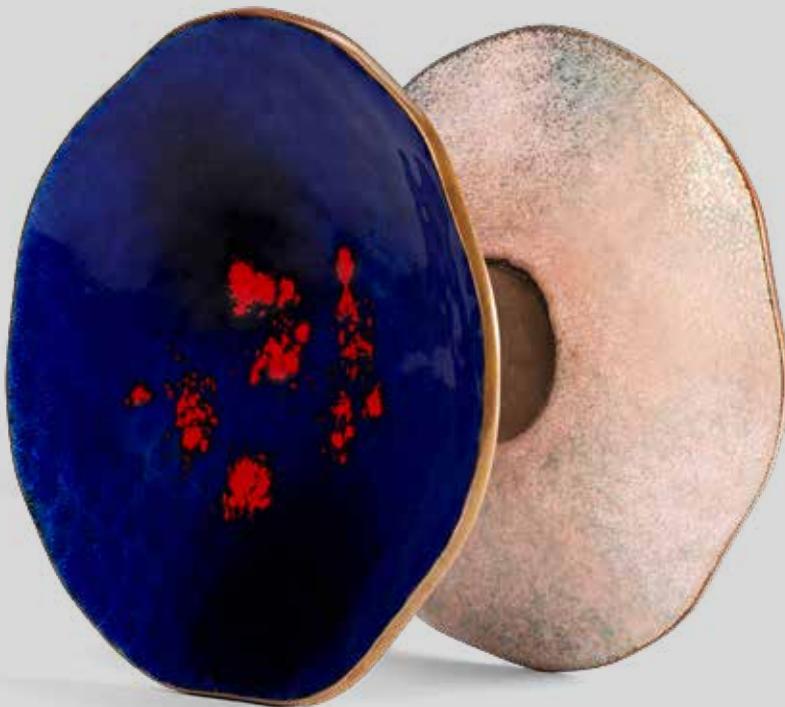
US\$3,000 - 5,000

Provenance
 Private Collection, Milan

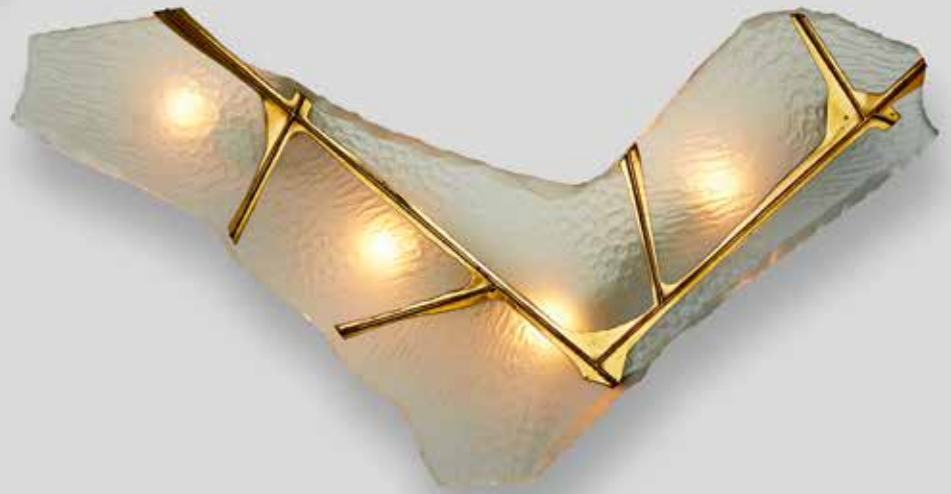
49
PAOLO DE POLI (1905-1996)
 Pair of Door Handles
 circa 1955
 enameled copper
 height 6in (15cm); width 6in (15cm); depth 4
 1/4in (10.5cm)

US\$1,000 - 1,500

Provenance
 Private Collection, Milan



49 (part illustrated)



50

MAX INGRAND (1908-1969)

Pair of Wall Lights

circa 1960

model no. 1844, for Fontana Arte, acid frosted glass, enameled steel,
brass

each height 17in (43cm); width 27in (68cm); depth 4 1/4in (11cm)

US\$20,000 - 30,000

Literature

Franco Deboni, 'Fontana Arte: Gio Ponti, Pietro Chiesa, Max Ingrand',
Allemandi & C., 2012, fig. 336



51

51

JOE (1930-1971) AND GIANNI COLOMBO (1937-1993)

Acrilica Table Lamp

designed 1962

model no. 281, for O-Luce, enameled steel, acrylic
height 9in (23cm); width 9 1/4in (23.5cm); depth 9 1/2
(24cm)

US\$3,000 - 5,000

The Acrilica model won the gold medal at the XIIIe
Triennale, Milan, 1964

Provenance

Private Collection, London

Literature

Ignazia Favata, Vittorio Fagone, 'Joe Colombo and Italian
Design of the Sixties', The MIT Press, 1988, p. 61

52

STILUX

Pair of Table Lamps

circa 1955

solid and perforated brass and aluminum

each height 8in (20.5cm); width 7in (18cm); depth 5 1/4in
(13.5cm)

US\$2,000 - 3,000



52

53

GINO SARFATTI (1912-1985)

Rare Table Lamp

circa 1950

model no. 573, for Arteluce, aluminum, chrome-plated steel, acrylic,
label 'AL MILANO ARTELUCE'

height 20in (51cm)

US\$3,000 - 5,000

Provenance

Private Collection, Milan

Literature

Marco Romanelli, Sandra Severi, 'Gino Sarfatti: Opere Scelte 1938-1973, Selected works', Silvana Editoriale, 2012, no. 573, p. 434

Clémence & Didier Krzentowski, 'The Complete Designers' Lights II: 35 Years of Collecting', JRP Ringier, 2014, p. 144





54

ETTORE SOTTASS (1917-2007)

Rare Wall Mirror

1957

for Santambrogio and De Berti, tinted mirror glass, brass, enameled steel

height 71 3/4in (182cm); width 12in (30.5cm)

US\$10,000 - 15,000

Provenance

Private Collection, Milan



55^W

ERCOLE BAROVIER (1889-1974)

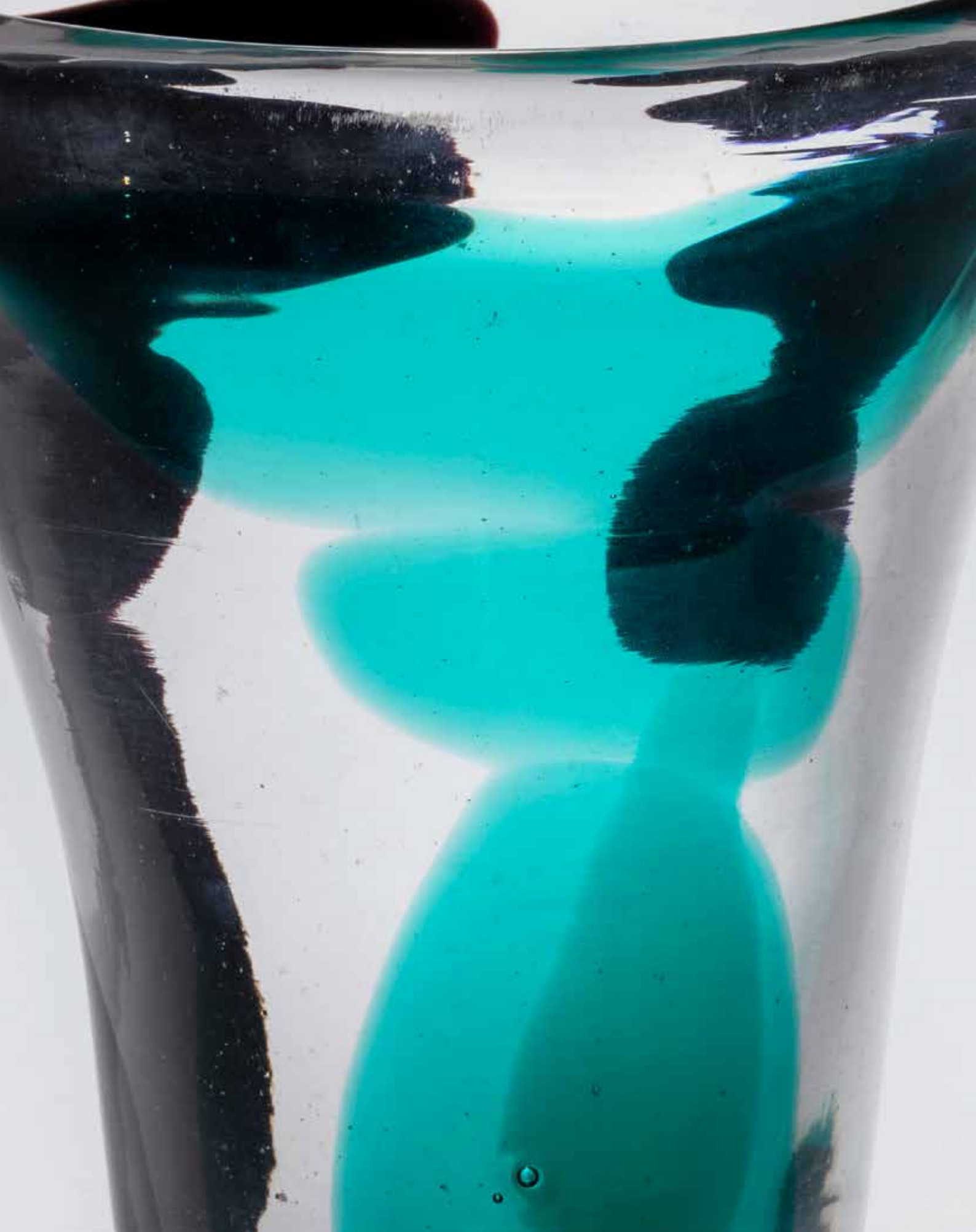
Ceiling Light

1973

model no. 2607-16, for Barovier & Toso, blown glass, enameled steel
height 16in (41cm); width 47in (119.5cm); depth 27in (68.5cm)

US\$10,000 - 15,000

Sold together with a partial copy of the design drawing from the
Barovier & Toso archives, dated 14.2.73



56

FULVIO BIANCONI (1915-1996)

Rare Con Macchie Vase

circa 1950

model no. 4325, for Venini, internally decorated glass, acid etched stencil 'venini murano ITALIA'
height 9 3/4in (24.8cm); diameter 8in (20.5cm)

US\$50,000 - 70,000



Provenance

Paolo Venini, Venice, Italy
Oskar Stonorov (1905-1970), gifted by the above, circa 1955
Thence by descent

Exhibited

XXVe Biennale, Venice, 1950 (model first shown)
'Italy at Work', North America, 1950-53 (model shown)
XXVIe Biennale, Venice, 1952 (model shown)

Literature

Marino Barovier, 'Fulvio Bianconi at Venini',
Skira, 2015, p. 118



Derek and Oskar Stonorov photograph by Xanti Schawinsky, June, 1953



58

57

CARLO SCARPA (1906-1978)

Tessuto Bowl

designed 1938, executed circa 1950

model no. 3716, for Venini, hand-blown glass, acid etched stencil
'venini murano ITALIA'

height 1 3/4in (4.5cm); diameter 6 1/2in (16.5cm)

US\$3,000 - 5,000

Provenance

Paolo Venini, Venice, Italy

Oskar Stonorov (1905-1970), gifted by the above, circa 1955

Thence by descent

Literature

Marino Barovier, 'Carlo Scarpa: Venini 1932-1947', Skira, 2012, p. 265

58

PAOLO VENINI (1895-1959)

Large Inciso Vase

circa 1955

model no. 4821, for Venini, sommerso glass, wheel engraved, acid
etched stencil 'venini murano ITALIA' and Venini paper label with hand
written number '4821'

height 16 1/4in (41cm)

US\$4,000 - 6,000

Provenance

Paolo Venini, Venice, Italy

Oskar Stonorov (1905-1970), gifted by the above, circa 1955

Thence by descent

Literature

Marino Barovier, 'Paolo Venini and his Furnace', Skira, 2016, p. 256-57



57

59

ARCHIMEDE SEGUSO (1909-1990)

Merletto Vase

1953

for Vetreria Archimede Seguso, internally decorated incalmo glass, foil workshop label 'Archimede Seguso Murano Made in Italy'
height 8in (21cm)

US\$10,000 - 15,000

Provenance

Private Collection, Turin

Private Collection, Milan

Literature

Marc Heiremans, 'Art Glass from Murano 1910-1970, Arnoldsche, 1993, p. 130 (model illustrated with yellow bands)





60

CARLO SCARPA (1906-1978)

Rare Monumental Rilievi Vase

circa 1940

model no. 3694, for Venini, iridized, tinted glass, acid etched stencil

'venini murano MADE IN ITALY'

height 17 1/4in (44cm)

US\$25,000 - 35,000

The present model was usually executed in corosso glass, however on rare occasions the model had been executed in other techniques, in this case in tinted translucent and iridized glass. At least one other example is known to exist in lattimo glass.

Provenance

Venini Showroom, Rome

Private Collection, Rome, acquired from the above, 1948

Thence by descent

Literature

Marino Barovier, 'Carlo Scarpa: Venini 1932-1947', Skira, 2012,

p. 196 (lattimo glass variant illustrated), p. 205 (corosso glass

example illustrated)





61

CARLO SCARPA (1906-1978)

Rare A Macchie Dish

1942

model no. 4476, for Venini, hand-blown iridescent and polychrome

glass, acid etched stencil 'venini murano ITALIA'

height 1 1/4in (3cm); width 10 1/2in (26.5cm); depth 8 3/4in (22cm)

US\$25,000 - 35,000

Provenance

Private Collection, Sherman Oaks, California, acquired circa 1950

Thence by descent

Literature

Marino Barovier, 'Carlo Scarpa: Venini 1932-1947', Skira, 2012, p. 449



62

ERCOLE BAROVIER (1889-1974)

Con Applicazione Vase

circa 1935

for Ferro Toso Barovier, hand-blown glass with applications

height 17in (43cm); diameter 8 1/4in (21cm)

US\$8,000 - 12,000

Provenance

Private Collection, New York

Literature

Attilia Dorigato, 'Ercole Barovier 1889-1974: Vetraio Muranese',

Marsilio Editori, 1980, p. 64 (model variants illustrated)



63

ERCOLE BAROVIER (1889-1974)

Medusa Vase

1938

for Ferro Toso Barovier, iridized glass with gold powder inclusions
height 16 1/4in (41cm); diameter 12 1/2in (32cm)

US\$8,000 - 12,000

Provenance

Private Collection, New York

Literature

Attilia Dorigato, 'Ercole Barovier 1889-1974: Vetraio Muranese',
Marsilio Editori, 1980, p. 67



TOMASO BUZZI (1900-1981)

Laguna Table Lamp

designed 1932-33, executed circa 1940

for Venini, hand-blown incalmo laguna glass, with gold foil inclusions
*height 12 3/4in (32.5cm)***US\$5,000 - 7,000**

The present lot relates to the form of vase model no. 3427 in lattimo glass. This version created as a table lamp was executed in laguna glass and the proportions were scaled up to be more suitable to function as a table lamp.

Provenance

Private Collection, Milan

LiteratureMarino Barovier, 'Tomaso Buzzi at Venini', Skira, 2014, p. 230
(vase model form illustrated)

65

PAOLO VENINI (1895-1959)

Two Mezza Filigrana Bottles
designed 1956

model no. 4331, for Venini, zanfirico glass with twisted green and pink
canes, foil label to underside of each 'VENINI MURANO'
height 13 1/2in (34cm)

US\$4,000 - 6,000

Provenance

Private Collection, Milan

Exhibited

'Les Nouveaux Verres de Murano', Paris, 1956
XXVIIIe Biennale, Venice, 1956

Literature

Marino Barovier, 'Paolo Venini and his Furnace', Skira, 2016, p. 279

66

PAOLO VENINI (1895-1959)

Rare Inciso Bottle
circa 1955

for Venini, hand-blown and carved glass with wheel carved inciso
texture, acid etched stencil 'venini murano ITALIA'
height 10in (25cm)

US\$2,000 - 3,000

Provenance

Private Collection, Milan



66



65

DISEGNO AND COLORE: A 20TH CENTURY ITALIAN SYNTHESIS IN THE CERAMIC WORK OF GUERRINO TRAMONTI (1915-1992) BY BRIAN KISH



Guerrino Tramonti, circa 1940

Almost 70 years have passed since New Yorkers were first introduced to the art ceramics of Guerrino Tramonti. The occasion was the now legendary *Italy At Work: Her Renaissance In Design Today*, a 1950 exhibition at the Brooklyn Museum that showcased his latest ceramics in the exalted company of Ponti, Fontana, Melotti, Gariboldi, Gambone, and Fantoni. “Renaissance in design” is a phrase that sums up Tramonti’s life path. Born in Faenza, a city of great renown throughout Renaissance Europe for the high quality of its tin-glazed pottery otherwise known as Maiolica, he already had a head start.

Although Tramonti then led a somewhat peripatetic existence throughout most of Italy, due to his inquiring sensibility, he kept returning to Faenza, eventually settling down with a studio and stream of prestigious teaching positions. His many travels and residencies from Abisola near Genoa to Venice on the other side or even Rome, put him in direct contact with older and renowned artists of the day, Arturo Martini, Filippo De Pisis, and Franco Gentilini.

Their influence, evident in his early sculptures and paintings, can also be felt in his ceramics. However, with his successful entries for the 10th Milan Triennale of 1954, Tramonti began to demonstrate that he was on course to elaborate his own aesthetic realm; it constantly pivots from *disegno* to *colore* and back again. His entire output hinges on this Renaissance trope, which pits concept and design against the painterly and the sensual, all in the quest to achieve ultimate beauty. In the end, he clearly aims at both, as seen in this collection of large circular *piatti* contrasted with various vases and vessels.

Each art ceramic is approached pictorially; this is most obvious in the series of plates with their hard-edge images depicting cats, fish, fruits, and enigmatic hands. These “still lifes” are segmented with stylised heraldic patterns, and all are bound to an immediate visual gestalt. At times, poetic utterances or pointedly political writings thread their way into these intricate designs. Some of the commentaries are in sync with the post-war political crisis in Italy and more specifically with the 1968 uprisings.

Besides the plates he designed at the same time a collection of vases that explore another pictorial realm, one of pure abstractions. Here Tramonti was looking eastward to Asian precedents as well as to his Italian contemporaries. Nanni Valentini and Carlo Zauli shared the same concerns, seeking autonomy from function to suggest a contemplative space. This drive towards a more ethereal art nudged Tramonti to develop new glazing techniques that set him apart from his contemporaries. His rigorous experiments with materials and steady research gave birth to the *doppia cristallina* technique, an over-glazing of his ceramics with a double layer of crystal. The selection of grès stoneware vases in this auction with their delicately crystallised pigments exemplify the rarefied elegance of his work.

His achievements were widely acknowledged throughout his career. Guerrino Tramonti won many prizes including twice the prestigious Premio Faenza for best ceramics. Now, his idiosyncratic expressive language tinged with humour and sometimes a touch of biting irony receives another accolade as his work is made accessible to New Yorkers one more time this December.

67

GUERRINO TRAMONTI (1915-1992)

Large Vase

1965-66

glazed gres stoneware, glaze mark 'TRAMONTI FAENZA'

height 13 1/4in (33.5cm); diameter 12 3/4in (32.5cm)

US\$2,000 - 3,000

Provenance

Guerrino Tramonti (1915-1992), Faenza

Thence by descent

Exhibited

'Guerrino Tramonti: Magiche Policromie', Museo Nazionale Palazzo Venezia, Galleria Camponi, Roma, 17 October-8 November, 2009



68

GUERRINO TRAMONTI (1915-1992)

Large Vase

1965-67

glazed gres porcelain, glaze mark 'TRAMONTI FAENZA'
height 9in (23cm); diameter 16 1/4in (41.5cm)

US\$3,000 - 5,000

Provenance

Guerrino Tramonti (1915-1992), Faenza

Thence by descent

69

GUERRINO TRAMONTI (1915-1992)

Large Vase

circa 1965

glazed gres porcelain, glaze mark 'TRAMONTI FAENZA' and paper label
'FONDAZIONE GUERRINO TRAMONTI ARCHIVIO NO. 213'
height 25 1/4in (64cm); diameter 5 3/4in (14.5cm)

US\$4,000 - 6,000

Provenance

Guerrino Tramonti (1915-1992), Faenza

Thence by descent

70

GUERRINO TRAMONTI (1915-1992)

Large Vase

1965-68

glazed gres porcelain, glaze mark 'TRAMONTI FAENZA'
height 23 3/4in (60.5cm); diameter 5 1/2in (14cm)

US\$4,000 - 6,000

Provenance

Guerrino Tramonti (1915-1992), Faenza

Thence by descent

Exhibited

'Tramonti, Artista Aristocratico', Bologna, San Giorgio in Poggiale,
25 November, 1994-8 January 1995

'Guerrino Tramonti: Magiche Policromie', Museo Nazionale Palazzo
Venezia, Galleria Camponi, Roma, 17 October-8 November, 2009

Literature

Andrea Emiliani, 'Tramonti, Artista Aristocratico', Stefano Pataconi
Editore, 1994, unpaginated

Josune Ruiz de Infante, 'Guerrino Tramonti: Magiche Policromie',
Museo Nazionale Palazzo Venezia, Galleria Camponi, Roma,
Exhibition Catalogue, Silvana Editoriale, Milan, 2009, unpaginated



68



69



70

71

GUERRINO TRAMONTI (1915-1992)

Large Bowl

1966-68

glazed gres porcelain, glaze mark 'TRAMONTI FAENZA'
height 5 1/4in (13cm); diameter 17in (43.5cm)

US\$4,000 - 6,000

Provenance

Guerrino Tramonti (1915-1992), Faenza
Thence by descent



72

GUERRINO TRAMONTI (1915-1992)

Large Vase

1965

glazed gres porcelain, glaze mark 'TRAMONTI FAENZA'
height 11 1/2in (29cm); diameter 15 1/4in (39cm)

US\$3,000 - 5,000

Provenance

Guerrino Tramonti (1915-1992), Faenza

Thence by descent





73

73
GUERRINO TRAMONTI (1915-1992)
 Natura Morta con Pere
 1969-73
 glazed terracotta with a crystalline glaze
 height 2in (5cm); diameter 20in (51cm)

US\$4,000 - 6,000

Provenance
 Guerrino Tramonti (1915-1992), Faenza
 Thence by descent

Literature
 'Guerrino Tramonti: The Magician of Color, Raised in Faenza, Italy', NHK Planet Chubu, 2011, p. 122, fig. 99



74

74
GUERRINO TRAMONTI (1915-1992)
 Cocomero con Pere
 1970
 glazed terracotta with a crystalline glaze
 height 2 1/2in (6.5cm); diameter 20 1/2in (52cm)

US\$4,000 - 6,000

Provenance
 Guerrino Tramonti (1915-1992), Faenza
 Thence by descent

75

GUERRINO TRAMONTI (1915-1992)

Cocomero con Pere

1969-71

glazed terracotta with a crystalline glaze, glaze mark 'TRAMONTI'

height 2 1/2in (6.5cm); diameter 22in (56cm)

US\$4,000 - 6,000

Provenance

Guerrino Tramonti (1915-1992), Faenza

Thence by descent



75

76

GUERRINO TRAMONTI (1915-1992)

Cocomero

1969-70

glazed terracotta with a crystalline glaze, glaze mark 'TRAMONTI FAENZA'

height 2 1/2in (6.5cm); diameter 20 3/4in (53cm)

US\$4,000 - 6,000

Provenance

Guerrino Tramonti (1915-1992), Faenza

Thence by descent



76



77

77

GUERRINO TRAMONTI (1915-1992)

Volti

1970-73

glazed terracotta with a crystalline glaze

height 2in (5cm); diameter 19 1/2in (49.5cm)

US\$4,000 - 6,000

Provenance

Guerrino Tramonti (1915-1992), Faenza

Thence by descent

78

GUERRINO TRAMONTI (1915-1992)

Natura Morta con Mano

1969-70

glazed terracotta with a crystalline glaze

height 2in (5cm); diameter 19in (48cm)

US\$4,000 - 6,000

Provenance

Guerrino Tramonti (1915-1992), Faenza

Thence by descent



78

79

GUERRINO TRAMONTI (1915-1992)

Tavolo Imbandita con Mano

1980-84

glazed terracotta with a crystalline glaze
height 2 1/2in (6.5cm); diameter 20 1/2in (52cm)

US\$4,000 - 6,000

Provenance

Guerrino Tramonti (1915-1992), Faenza
Thence by descent



80

GUERRINO TRAMONTI (1915-1992)

Natura Morta con Mano

1970

glazed terracotta with a crystalline glaze, glaze mark
'TRAMONTI FAENZA'

height 2 1/2in (6.5cm); diameter 21 1/2in (55cm)

US\$4,000 - 6,000

Provenance

Guerrino Tramonti (1915-1992), Faenza
Thence by descent

Exhibited

'Guerrino Tramonti: Magiche Policromie', Museo Nazionale
Palazzo Venezia, Galleria Camponi, Roma, 17 October-8
November, 2009

79

Literature

Josune Ruiz de Infante, 'Guerrino Tramonti: Magiche
Policromie', Museo Nazionale Palazzo Venezia, Galleria
Camponi, Roma, Exhibition Catalogue, Silvana Editoriale,
Milan, 2009 unpaginated



80

81

GUERRINO TRAMONTI (1915-1992)

Large Vase

1962-65

glazed gres stoneware, glaze mark 'TRA FAE'
height 18 1/2in (47cm); diameter 7in (17.5cm)

US\$2,500 - 3,500

Provenance

Guerrino Tramonti (1915-1992), Faenza
Thence by descent

82

GUERRINO TRAMONTI (1915-1992)

Large Vase

circa 1965

glazed porcelain, glaze mark 'TRA FAE'
*height 21in (53.5cm); diameter 5 1/4in
(13.5cm)*

US\$4,000 - 6,000

Provenance

Guerrino Tramonti (1915-1992), Faenza
Thence by descent

Exhibited

'Guerrino Tramonti: Magiche Policromie',
Museo Nazionale Palazzo Venezia, Galleria
Camponi, Roma, 17 October-8 November,
2009

Literature

Josune Ruiz de Infante, 'Guerrino Tramonti:
Magiche Policromie', Museo Nazionale
Palazzo Venezia, Galleria Camponi, Roma,
Exhibition Catalogue, Silvana Editoriale, Milan,
2009, unpaginated



81



82

83

GUERRINO TRAMONTI (1915-1992)

Large Vase

1962-66

glazed gres stoneware, glaze mark 'TRAMONTI FAENZA'
height 13 1/4in (33.5cm); diameter 12 3/4in (32.5cm)

US\$2,500 - 3,500

Provenance

Guerrino Tramonti (1915-1992), Faenza
Thence by descent



83

84

GUERRINO TRAMONTI (1915-1992)

Large Vase

1962-66

glazed gres porcelain, glaze mark 'TRA FAE'
height 21 1/4in (54cm); diameter 9 3/4in (24.5cm)

US\$3,000 - 5,000

Provenance

Guerrino Tramonti (1915-1992), Faenza
Thence by descent



84

85

GUERRINO TRAMONTI (1915-1992)

Large Vase

1962-65

glazed gres stoneware

height 23 3/4in (60cm); diameter 7in (17.5cm)

US\$3,000 - 5,000

Provenance

Guerrino Tramonti (1915-1992), Faenza

Thence by descent

Exhibited

'Guerrino Tramonti: Magiche Policromie', Museo Nazionale Palazzo Venezia, Galleria Camponi, Roma, 17 October-8 November, 2009



85

86

GUERRINO TRAMONTI (1915-1992)

Large Vase

1962-65

glazed gres porcelain, glaze mark 'TRAMONTI FAENZA 11'

height 22 3/4in (52.5cm); diameter 6 3/4in (17cm)

US\$3,000 - 5,000

Provenance

Guerrino Tramonti (1915-1992), Faenza

Thence by descent

Exhibited

'Guerrino Tramonti: Magiche Policromie', Museo Nazionale Palazzo Venezia, Galleria Camponi, Roma, 17 October-8 November, 2009



86

87

GUERRINO TRAMONTI (1915-1992)

Large Vase

1962-63

glazed gres porcelain, glaze mark 'TRAMONTI FAENZA'
height 29in (73.5cm); diameter 8 1/2in (22cm)

US\$3,000 - 5,000

Provenance

Guerrino Tramonti (1915-1992), Faenza

Thence by descent



87

88

GUERRINO TRAMONTI (1915-1992)

Large Vase

1965-68

glazed gres porcelain, glaze mark 'TRAMONTI FAENZA'
height 20 1/2in (52cm); diameter 11in (18cm)

US\$3,000 - 5,000

Provenance

Guerrino Tramonti (1915-1992), Faenza

Thence by descent



88

89^W

TAPIO WIRKKALA (1915-1985)

Coffee Table

designed 1958

model no. 9013, for Asko, padauk and maple inlaid with hazel, enameled steel, branded 'TAPIO WIRKKALA ASKO MADE IN FINLAND'

height 21 1/4in (54cm); width 48 3/4in (124cm); depth 24 1/2in (62cm)

US\$3,000 - 5,000

Literature

Marianne Aav, 'Tapio Wirkkala 1915-1985: Eye, Hand, and Thought', Taideteollisuusmuseo, 2001, p. 380

90

JENS QUISTGAARD (1919-2008)

Rare Set of Fireplace Tools

circa 1960

for Dansk Designs, patinated iron, straw, brass, each stamped 'DANSK DESIGN DENMARK JHQ (C)'

width 30in (76cm); height 22in (56cm)

US\$4,000 - 6,000

Provenance

Private Collection, Kansas



89



THE COLLECTIVE CODE

The Collective Code, paired tribal and modernist collector Bruce Moore with leading fashion, film and music visionary Lynn Pickwell, drawing upon her keen eye for form and context.

The collection stands at the apex of fashion, art and design. Iconic and unknown fashion, minimalism, Dada, tribal and design brought together into inspiring and unexpected juxtapositions.

"It's the thrill of the hunt and the new formations; once you've put many pieces of the puzzle together, you cut it all up, and start again."
Lynn Pickwell



91

91^W

GIO PONTI (1891-1979)

Wall Cabinet

circa 1950

executed by Egidio Proserpio, enameled steel, sapele-veneered wood
height 59in (150cm); width 115 1/4in (292cm); depth 15 1/2in
(39.5cm)

US\$15,000 - 20,000

Sold together with a certificate of expertise from the Gio Ponti Archive

Provenance

Private collection, Cantù

Private Collection, California

Literature

Lisa Licitra Ponti, 'Gio Ponti: The Complete Works 1923-1978',
Thames & Hudson, 1990, p. 132 (model variant illustrated)

Ugo La Pietra, 'Gio Ponti: L'arte si Innamora dell'Industria', Coliseum,
2009, p. 190 (model variant illustrated)

92^W

GIO PONTI (1891-1979)

Rare Pair of Side Chairs

1939-40

for Pietro Chiesa, Italian walnut, upholstery
height 42in 1/2in (108cm); width 20 1/2in (52cm); depth 19in (48cm)

US\$8,000 - 12,000

Sold together with a certificate of expertise from the Gio Ponti Archive

The present lot has clear parallels in terms of both design, and the use of expressive old growth Italian walnut, with the chair model that was conceived for the renovation of the Palazzo del Bo at Padua University, 1939-40. Gio Ponti is known to have frequently re-visited designs for institutions such as the University of Padua, for other smaller private commissions.

Provenance

Private Collection, Italy

Philippe Denys, Brussels

Private Collection, California, acquired from the above, 2000



92

93^W

ITALIAN MODERN

Dining Table

circa 1950

likely for Fratelli Rizzi, Cantù, Italian walnut, brass, glass

height 29 1/2in (75cm); width 86 1/2in (219cm); depth 43in (109cm)

US\$15,000 - 30,000

Provenance

Private Collection, Italy

Philippe Denys, Brussels

Private Collection, California, acquired from the above, circa 2000





94^W

HANS WEGNER (1914-2007)

Sofa

model no. AP33S, for A.P. Stolen, oak, upholstery

height 30 1/2in (77cm), width 100in (254cm); depth 25in (63cm)

US\$3,000 - 5,000



95^W

OLE WANSCHER (1903-1985)

Colonial Settee

designed 1949

for Poul Jeppesen, mahogany, cane, leather upholstery, manufacturer's mark 'PJ DENMARK' and enameled metal Danish Control label
height 33 1/4in (84cm), width 48 1/2in (123cm), depth 25 1/2in (64cm)

US\$4,000 - 6,000

96^W

TAPIO WIRKKALA (1915-1985)

Coffee Table

designed 1958

model no. 9011, for Asko, enameled steel, birch inlaid with teak, branded 'TAPIO WIRKKALA ASKO MADE IN FINLAND'
height 19in (48cm), width 49in (124cm), depth 24 1/4in (62cm)

US\$2,000 - 3,000

Literature

Marianne Aav, 'Tapio Wirkkala 1915-1985: Eye, Hand, and Thought',
Taideteollisuusmuseo, 2001, p. 380



95



96

97^W

TOMMI PARZINGER (1903-1981)

Dining Table

circa 1950

for Parzinger Originals, brass, sycamore, mahogany

height 29 1/4in (74cm); width 72in (182cm); depth 38 1/2in (96cm)

US\$4,000 - 6,000



98^W

HANS PIECK (BORN 1923)

Early Lawo Lounge Chair

designed 1945

laminated birch, remnants of manufacturer's paper label

height 30 1/4in (77cm); width 26 1/4in (67cm); depth 28in (71cm)

US\$2,000 - 3,000

Provenance

Private Collection, The Netherlands

Private Collection, California, acquired from the above, 2004

99^W

RALPH RAPSON (1914-2008)

Rocking Chair

circa 1945

for H.G. Knoll & Associates, birch, upholstery

height 29in (73.5cm); width 33in (84cm); depth 28in (71cm)

US\$3,000 - 5,000

Provenance

Reform Gallery, Los Angeles, California

Private Collection, California, acquired from the above, 2003



98



99

100^W

POUL KJAERHOLM (1929-1980)

Pair of Side Chairs

designed 1960, executed 1960-81

model no. PK9, for E Kold Christensen, matte chrome-plated steel,

cognac leather, each stamped 'EKC'

height 29 1/4in (74cm); width 22 1/2in (57cm); depth 22in (56cm)

US\$5,000 - 7,000

Provenance

Private Collection, California

Literature

Micheal Sheridan, 'The Furniture of Poul Kjaerholm: Catalogue Raisonné', Gregory R. Miller & Co, 2007, p. 119



101^W

POUL KJAERHOLM (1929-1980)

Early Extending Dining Table

designed 1963 and executed 1963-81

model no. PK54, for E Kold Christensen, together with extension leaves and storage rack, matte chrome-plated steel, Cippolino marble, white maple, frame stamped 'EKC'

height 25 1/8in (64cm); diameter fully extended 83 1/2in (212cm);

diameter of marble top 55in (140cm)

US\$30,000 - 50,000

Provenance

Philippe Denys, Brussels

Private Collection, California, acquired from the above, 2000

Literature

Micheal Sheridan, 'The Furniture of Poul Kjaerholm: Catalogue Raisonné', Gregory R. Miller & Co, 2007, p. 131



102^W

PAUL FRANKL (1886-1958)

Coffee Table

circa 1950

model no. 5004, for Johnson Furniture Company, cork, mahogany, ink
mark '#5004 199' and stamped '2'

height 13 1/2in (34cm), width 71in (180cm), depth 21in (53cm)

US\$3,000 - 5,000

Provenance

'Modernism', The Armory, New York

Private Collection, California, acquired from the above, 2004



103^W

SILVIO BERRONE

Desk

1955-56

for glass, brass, faux leather, oak, acid etched stencil to glass drawer fronts 'Vitrex'

height 31in (79cm); width 65in (165cm); depth 32 1/2in (82.5cm)

US\$15,000 - 25,000

Designed and executed for use in the Bialetti company headquarters in Omegna, Italy. Berrone was awarded 100,000 Lira in 1957 for his innovative use of Vitrex glass throughout the structure and interior.

Provenance

Private Collection, Italy

Private Collection, California

Literature

Domus, No. 344, July 1958, p. 86-9



104

GABRIELLA CRESPI (1922-2017)

Picture Frame

circa 1970

steel, glass, stamped facsimile signature 'Gabriella Crespi'
height 8in (20cm); width 8in (20cm); depth 1 1/2in (4cm)

US\$1,500 - 2,000

Provenance

Private Collection, California

105

ANGELO MANGIAROTTI (1921-2012)

Vase

circa 1970

manufactured by Brambilla Brothers, glazed ceramic, glaze mark 'A.
Mangiarotti'

height 7 3/4in (18cm); width 7 3/4in (18cm); depth 6 1/2in (16.5cm)

US\$1,000 - 1,500

Provenance

Private Collection, California



104



105

106

TOSHIKO TAKAEZU (1922-2011)

Double-Gourd Vase

circa 1955

glazed stoneware

height 16 1/2in (42cm); width 7in (18cm); depth 6 1/2in (16.5cm)

US\$4,000 - 6,000

Provenance

Reform Gallery, Los Angeles

Private Collection, California, acquired from the above 2004



107^W

PAUL FRANKL (1886-1958)

Console Table

circa 1950

model no. 5008, for Johnson Furniture Company, cork and cerise oak,

ink stamp '#5008-218'

height 29 1/4in (74cm); width 40in (101cm); depth 20in (50.5cm)

US\$2,500 - 3,500

Provenance

Paul Donzella, New York

Private Collection, California, acquired from the above, circa 2000



107

108^W

PHILIP JOHNSON (1906-2005) AND RICHARD KELLY

Floor Lamp

1953

for Edison Price, Inc., brass, enameled aluminum
height 40 1/2in (103cm), diameter 26in (66cm)

US\$15,000 - 25,000

Provenance

Philip Johnson (1906-2005)

Reform Gallery, Los Angeles

Private Collection, California, acquired from the above,
circa 2000



108

109^W

VLADIMIR KAGAN (1927-2016)

Try-Symmetric Coffee Table

circa 1955

for Kagan-Dreyfuss, walnut, glass

height 15in (38cm); width 58 1/2in (151cm); depth 30in (76cm)

US\$3,000 - 5,000

Provenance

Private Collection, California

Literature

Vladimir Kagan, 'The Complete Kagan: A Lifetime of Avant-Garde Design', Pointed Leaf Press, 2006, p. 86



109



110

MAGDALENA ABAKANOWICZ (1930-2017)

Anonim

1965

hand woven wool, cotton and various fibers, ink label to reverse
'MAGDALENA ABAKANOWICZ ANONIM 1965' and signed 'M.
Abakanowicz'

56 x 41 in (142 x 104 cm)

US\$25,000 - 35,000

Provenance

Mr and Mrs J.L. Hurschler, California

California Institute of the Arts, Valencia, California

Private Collection, California

Private Collection, California, acquired from the above, 2006

Exhibited

'Magdalena Abakanowicz: Early Works of the 1960s', Susanne
Hilberry Gallery, Michigan, 1997

'Magdalena Abakanowicz: Early Abakans', Wirtz Gallery, San
Francisco, 2000

111^W

RAYMOND LOEWY (1893-1986)

Large DF2000 Sideboard

circa 1965

for Doubinsky Frères, enameled aluminum, plastic, lacquered wood,
manufacturer's label to drawer

height 29 3/4in (75.5cm); width 80in (203.5cm); depth 20in (51cm)

US\$3,000 - 5,000

Provenance

Private Collection, Paris

Private Collection, California, acquired from the above, circa 2000



112

ISMAEL DE LA SERNA (1897-1968)

Still Life with Guitar

gouache on masonite, signed 'ISMAEL DE LA SERNA'

8 1/2 x 7in (21.5 x 18cm)

US\$5,000 - 7,000

Provenance

Private Collection, California

113^W

JEAN PROUVÉ (1901-1984)

S.C.A.L. Daybed

circa 1950

model no. 456, manufactured by Les Ateliers Jean Prouvé, for Galerie

Steph Simon, enameled steel, oak-veneered wood, upholstery

height 21 1/2in (55cm); width 76in (193cm); depth 36in (92cm)

US\$10,000 - 15,000

Provenance

JF Chen, Los Angeles

Private Collection, California

Literature

Peter Sulzer, 'Jean Prouvé Complete Works, Volume 3: 1944-1954',

Birkhauser, 2005, p. 166



112



113

THE COLLECTION OF DIANE AND MARC GRAINER

114

JOHN WARD (BORN 1938)

Brown and Green Pot

1986

hand built stoneware, impressed 'JW'

height 8 1/4in (21cm); diameter 6in (15cm)

US\$4,000 - 6,000

Provenance

'New Craftsman', St. Ives, Cornwall

Acquired from the above, 1986

115

JOHN WARD (BORN 1938)

Vase

1986

hand-built stoneware, impressed 'JW'

height 13in (33cm); diameter 10 1/2in (27cm)

US\$6,000 - 8,000

Provenance

'New Craftsman', St. Ives, Cornwall

Acquired from the above, 1986



116

JENNIFER LEE (BORN 1956)

Asymmetric Amber Lichen Vase

1985-86

coil built and burnished stoneware, metallic oxides

height 9 1/4in (23.5cm); width 5in (13cm); depth 4 1/2in (11.5cm)

US\$8,000 - 12,000

Provenance

Crafts Council Shop, London

Acquired from the above, 1986

Exhibited

Mint Museum of Craft and Design, North Carolina, 1 October 2010-13

March, 2011

Literature

'Contemporary British Studio Ceramics: The Grainer Collection', Yale University Press, unpaginated



117^W

MARTIN BODISEN KALDAHL (BORN 1954)

Other Planes III

2002

hand-built stoneware, slip glazes, incised 'Kaldahl 2002'
height 28 1/2in (72.5cm); diameter 16in (41cm)

US\$4,000 - 6,000

Provenance

Purchased from Barrett Marsden, London

Acquired from the above, 2003

Exhibited

Mint Museum of Craft and Design, North Carolina, 1 October 2010-13
March, 2011

Literature

'Contemporary British Studio Ceramics: The Grainer Collection', Yale
University Press, unpaginated



118

NICHOLAS ARROYAVE PORTELA (BORN 1972)

A River Runs Through It

2002

ceramic with iridescent glaze, impressed 'NAP'

height 20in (51cm); width 7in (18cm)

US\$3,000 - 5,000

Provenance

Acquired directly from the artist, 2010



119

MERETE RASMUSSEN (BORN 1974)

Red Brown Twisted Form

2010

ceramic, applied with paint

height 8 3/4in (22cm); width 13in (33cm)

US\$4,000 - 6,000

Provenance

Contemporary Applied Arts, London

Acquired from the above, 2010



120

MERETE RASMUSSEN (BORN 1974)

Blue Twisted Form

2010

ceramic with painted surface

height 8 1/2in (21.2cm); width 10in (25.5cm)

US\$4,000 - 6,000

Provenance

Contemporary Applied Arts, London

Acquired from the above, 2010



121^W

CLAUDI CASANOVAS (BORN 1956)

Monumental Charger

1982

glazed stoneware, incised 'C. Casanovas 1982'

37 x 35 3/4in (94 x 91cm)

US\$10,000 - 15,000

Provenance

Bonhams, Knightsbridge, London

Acquired from the above, 1998



122^W

CLAUDI CASANOVAS (BORN 1956)

Monumental Charger

1989

glazed stoneware, incised 'C. Casanovas 1989'

38 1/2 x 37 1/2in (98 x 95cm)

US\$10,000 - 15,000

Provenance

Galerie Besson, London

Acquired from the above, 1995

Exhibited

'Claudi Casanovas', Galerie Besson, November-December, 1989

'International Ceramic World in Shigaraki', Museum of Contemporary Ceramic Art, Shigaraki, April-May, 1991, p. 63 (design illustrated)

'Claudi Casanovas', Boymans van Beuningen Museum, Rotterdam, December 1991-February, 1992

'Europäische Keramik 1993', Keramikmuseum Westerwald, Hoehr-Grenzhausen, Touring exhibition, 1993

Museum Het Princessehof, Leeuwarden, Friesland, January-March, 1993

Maison de la Ceramique, Mulhouse, April-June 1994

Bornholm Kunstmuseum, Rø Gødhjem, Denmark, July-August, 1994



123

PETER VOULKOS (1924-2002)

Charger

1973

stoneware, gouged and with push throughs, glaze mark 'VOULKOS 73'
diameter 18 3/4in (47.5cm); depth 3 1/2in (9cm)

US\$8,000 - 12,000



124^W

WENDELL CASTLE (1932-2018)

Common Ground

1989

stained cherry, bleached lacewood, patinated copper, plexiglass
height 47 1/2in (121cm); width 59in (150cm); depth 15 1/2in (39.5cm)

US\$10,000 - 15,000

The present work is the last stack laminate work by Wendell Castle. The patinated copper application covers the stack laminate base.

Provenance

Peter Joseph, New York

Donna Schneier Fine Arts NY

Acquired from the above, 1999

Exhibited

'RIT Woodworking Faculty Show', Dawson Gallery, Rochester, NY, March 3-28, 1989

Peter Joseph Gallery, 'Wendell Castle: Pedestal Pieces', 1991

Literature

Patricia Conivey, 'Art for Every-Day', Clarkson Potter, NY, 1990, p. 259 (illustrated under incorrect title 'Cavalcade')

Peter Joseph Gallery, 'Wendell Castle: Pedestal Pieces', Exhibition Catalogue, 1991, p. 84

Emily Evans Eerdams, 'Wendell Castle: A Catalogue Raisonné 1958-2012', The Artist Book Foundation, 2014, p. 223



125^W

WENDELL CASTLE (1932-2018)

Bestride

2002

carved maple chair frame with carved jelutong pillow, carved 'Castle 02'

height 37in (94cm); width 25in (63cm); depth 25in (63cm)

US\$50,000 - 70,000

Provenance

Leo Kaplan Modern, New York

Acquired from the above, 2002

Exhibited

'Wendell Castle', Leo Kaplan Modern, New York, May 2-June 8, 2002

Literature

Emily Evans Eerdams, 'Wendell Castle: A Catalogue Raisonné 1958-2012', The Artist Book Foundation, 2014, p. 306



(reverse)





126

126^W

WENDELL CASTLE (1932-2018)

Hooked Coat Rack

1991

stained mahogany, carved 'Wendell Castle 1991'

height 72in (183cm); width 19in (48cm); depth 12in (30cm)

US\$15,000 - 20,000

Provenance

Peter Joseph, New York

Purchased Donna Schneier Fine Arts, NY

Acquired from the above, 1999

Exhibited

'Furniture Fantasy', Susquehanna Art Museum, Harrisburg, Pennsylvania, November, 1993–January, 1994

Saks Fifth Avenue, New York, Window Display, October 14–October 21, 1992

Literature

Emily Evans Eerdams, 'Wendell Castle: A Catalogue Raisonné 1958-2012', The Artist Book Foundation, 2014, p. 297-98



127

127^W

WENDELL CASTLE (1932-2018)

Ice Bucket

1989

steel, wood, patinated bronze

height 43 3/4in. (111cm); width 15 3/4in (40cm); depth 11in (28cm)

US\$4,000 - 8,000

Provenance

Donna Schneier Fine Arts, NY

Acquired from the above, 1999



(wall configuration)

128^W

WENDELL CASTLE (1932-2018)

Southampton

1991

mahogany, bubinga, Baltic birch, mahogany veneer, acrylic and oil on board, painted signature 'Castle 91'

table configuration height 29in (91.5cm); width 37 1/4in (95cm); depth 35 3/4in (91cm); wall hanging configuration height 61in (155cm); width 38in (96cm); depth 8 1/2in (22cm)

US\$15,000 - 25,000

Provenance

Peter Joseph, New York

Donna Schneier Fine Arts, NY

Acquired from the above at SOFA, Chicago, 2000

Exhibited

'Wendell Castle..paints *Furniture', Dawson Gallery, Rochester, New York, March 20-April 21, 1992

Literature

Emily Evans Eerdams, 'Wendell Castle: A Catalogue Raisonné 1958-2012', The Artist Book Foundation, 2014, p. 259



128

129^W

JUDY MCKIE (BORN 1944)

Frog Cabinet

1996

carved and painted limewood, carved '(C) JKM 1996'

height 80 3/4in (205cm); width 38in (96.5cm); depth 15in (38cm)

US\$50,000 - 70,000

Provenance

Pritam & Earnes Gallery, East Hampton, NY

Acquired from the above, 1996



130^W

SOPHIE RYDER (BORN 1963)

Lady-Hare on Dog

1999

patinated bronze, from the edition of 9

height 59in (150cm); width 69in (175cm); depth 15 1/2in (39.5cm)

US\$50,000 - 70,000

Provenance

Berkeley Square Gallery, London

Acquired from the above, 2000





131^W

IVANA SRAMKOVA (BORN 1960)

Red Torso

1997

cast glass

height 55in (139.5cm); width 21in (53cm);

depth 12in (30.5cm)

US\$5,000 - 7,000

Provenance

Studio Glass Gallery, London

Acquired from the above, 1998



132^W

DANNY LANE (BORN 1955)

Unique Greenback Chair

1997

steel, float glass, knotted elm, five pence coin, ink mark 'Danny Lane
97 1/1'

height 29 1/4in (74cm); width 34 3/4in (88cm); depth 35in (89cm)

US\$10,000 - 15,000

Provenance

Danny Lane, London

'The Chair', Christie's, King Street, London, 29 October, 1997, lot 101

Danny Lane, London

Acquired from the above, 1999



133^W

BOAZ VAADIA (1951-2017)

Ba'al

1996

patinated bronze, boulder and bluestone, from the edition 5 plus 1
artist's proof

height 48in (122cm); width 46in (117cm); depth 46in (117cm)

US\$20,000 - 30,000

Sold, as illustrated, in-situ in Potomac, Maryland. Please contact a
member of the department for further details and viewing information

Provenance

Imago Gallery, Palm Desert, California

Acquired from the above, 1998



OTHER PROPERTIES

134^W

GEORGE NAKASHIMA (1905-1990)

Set of Six Conoid Chairs

1976-77

American black walnut, hickory spindles, ink mark 'Bell' to underside of seats

each 35 1/2in (90cm); width 20 1/2in (52cm); depth 20in (50.5cm)

US\$20,000 - 30,000

Provenance

Private Collection, Seattle, Washington

Commissioned directly from George Nakashima in 1976

Literature

Mira Nakashima, 'George Nakashima Woodworker', George Nakashima Woodworker SA, 2012, unpaginated





135^W

GEORGE NAKASHIMA (1905-1990)

Conoid Dining Table

1976-77

American black walnut, with three rosewood butterflies, two free edges and one fissure with sap-grain detail, black ink mark 'Bell'
height 28 3/4in (73cm); width 72in (183cm); depth 41 1/4in (105cm)

US\$15,000 - 25,000

Provenance

Private Collection, Seattle, Washington

Commissioned directly from George Nakashima in 1976

Literature

Mira Nakashima, 'George Nakashima Woodworker', George Nakashima Woodworker SA, 2012, unpaginated





136^W

GEORGE NAKASHIMA (1905-1990)

Hanging Wall-Cabinet

circa 1970

American black walnut with free edge and sap-grain

height 18in (46cm); width 72in (183cm); depth 17in (43cm)

US\$10,000 - 15,000

Provenance

Private Collection, New York



137

HARRY BERTOIA (1915-1978)

Bush Form (Untitled)

1974

welded copper and bronze with applied patina

height 10in (26cm); diameter 12in (30.5cm)

US\$15,000 - 25,000

The present work was commissioned by the current owner and is accompanied by a letter from Harry Bertoia dated April 29, 1974



138^W

GEORGE NAKASHIMA (1905-1990)

Wepman and High-Free Form Table

1970

American black walnut, larger table with partial free edge and extensive fissures, each with ink mark 'George Nakashima July 1970'

height 17 1/2in (44cm); width 24 1/2in (62cm); depth 20 1/4in (51.5cm); second table height 12 3/4in (32.5cm); width 18 1/2in (47cm); depth 12 1/4in (31cm)

US\$5,000 - 7,000

Provenance

Private Collection, Washington

Literature

Mira Nakashima, 'George Nakashima Woodworker', George Nakashima Woodworker SA, 2012, unpaginated



139^W

GEORGE NAKASHIMA (1905-1990)

Conoid Coffee Table

1970

American black walnut, two free edges, two fissures and sap grain detail, ink mark 'Rilly'

height 13in (33cm); width 55in (139.5cm); depth 28in (71cm)

US\$20,000 - 30,000

Provenance

Private Collection, Washington

Literature

Mira Nakashima, 'George Nakashima Woodworker', George Nakashima Woodworker SA, 2012, unpaginated



140^W

PIERRE JEANNERET (1896-1967)

Sofa

designed 1958

teak, vinyl upholstery

height 30 1/4in (77cm); width 65 1/2in (166.5cm); depth 28 1/2in (72.5cm)

US\$20,000 - 30,000

Provenance

Private Collection, London

Literature

Eric Touchaleaume, Gerald Moreau, 'Le Corbusier, Pierre Jeanneret: The Indian Adventure, Design-Art-Architecture', Gourcuff Gradenigo, 2010, p. 564



141^W

PIERRE JEANNERET (1896-1967)

Pair of Lounge Chairs

designed 1958

teak, vinyl upholstery

height 30 1/4in (77cm); width 29in (73.5cm); depth 27in (68.5cm)

US\$30,000 - 50,000

Provenance

Private Collection, London

Literature

Eric Touchaleaume, Gerald Moreau, 'Le Corbusier, Pierre Jeanneret: The Indian Adventure, Design-Art-Architecture', Gourcuff Gradenigo, 2010, p. 564





(reverse)

142^W

FRANÇOIS-XAVIER LALANNE (1927-2008)

Mouton Transhumant

circa 2000

number 49 from the edition of 250, patinated bronze and epoxy stone,

stamped '49/250', 'FXL' and 'LALANNE'

height 39 1/4in (89.5cm); width 39 3/4in (101cm); depth 13 1/2in (34cm)

US\$120,000 - 180,000

Sold together with a certificate of authenticity signed by Claude Lalanne and dated April 1, 2011

Provenance

Saint-Paul Art Moderne, Saint Paul de Vence

Private Collection, US, acquired from the above, 2011

Literature

Daniel Abadie, 'Lalanne(s)', Flammaerion, 2008, p. 186, 190



143

FRANÇOIS-XAVIER LALANNE (1927-2008)

Carpe d'Or

1987

edition Artcurial, gilt resin, impressed 'FXL LALANNE 33/250

ARTCURIAL'

height 11 3/4in (30cm); width 21 3/4in (55.2cm); depth 4 1/2in (11.5cm)

US\$25,000 - 35,000

Provenance

Private Collection, New York

Literature

Robert Rosenblum, 'Les Lalanne', Skira, 1991, p. 45



144^W

MARIA PERGAY (BORN 1930)

Wave Bench

circa 1970

stainless steel with satin finish, leather upholstery

height 13in (34cm); width 47 3/4in (121.5cm); depth 15 3/4in (40cm)

US\$20,000 - 30,000

Provenance

Commissioned by Giorgio Gedda (1934-2007), Turin, 1970-72

Thence by descent

Literature

Suzanne Demisch, Stephane Danant, 'Maria Pergay: Complete Works 1957-2010', Damiani, 2011, p. 111



Interior of Giorgio Gedda's apartment featuring the present lot, Turin, circa 1975





Interior of Giorgio Gedda's apartment featuring the present lot, Turin, circa 1975



145^W

MARIA PERGAY (BORN 1930)

Daybed

circa 1970

stainless steel with a satin finish, original upholstered seat cushions
height 15in (38cm); width 118in (300cm); depth 39 3/8in (100cm)

US\$70,000 - 90,000

Provenance

Commissioned by Giorgio Gedda (1934-2007), Turin, 1970-72

Thence by descent

Literature

Suzanne Demisch, Stéphane Danant, 'Maria Pergay: Complete Works
1957-2010', Damiani, 2011, p. 113



146^W

ANDRÉ DUBREUIL (BORN 1951)

Custom Sideboard

circa 1995

iron, enameled copper, marble

height 37 1/2 (95cm); width 69 1/2in (177cm); depth 24in (61cm)

US\$70,000 - 100,000

The present lot was commissioned directly from the designer by the present owner for their Colorado residence in 1995. André Dubreuil conceived the whole interior scheme including the present work that formed the centerpiece of the room.

Provenance

Jim Fifield, Colorado





147^W

MARK BRAZIER-JONES (BORN 1956)

Zodiac Mirror

1998

copper plated steel, glass, together with certificate of authenticity and catalogue fold out document

depth 5in (12.7cm); diameter 41in (104.1cm)

US\$8,000 - 12,000

Provenance

Private Collection, Los Angeles

148^W

ELIZABETH GAROUSTE (BORN 1946)

Arlequin Cabinet

2002

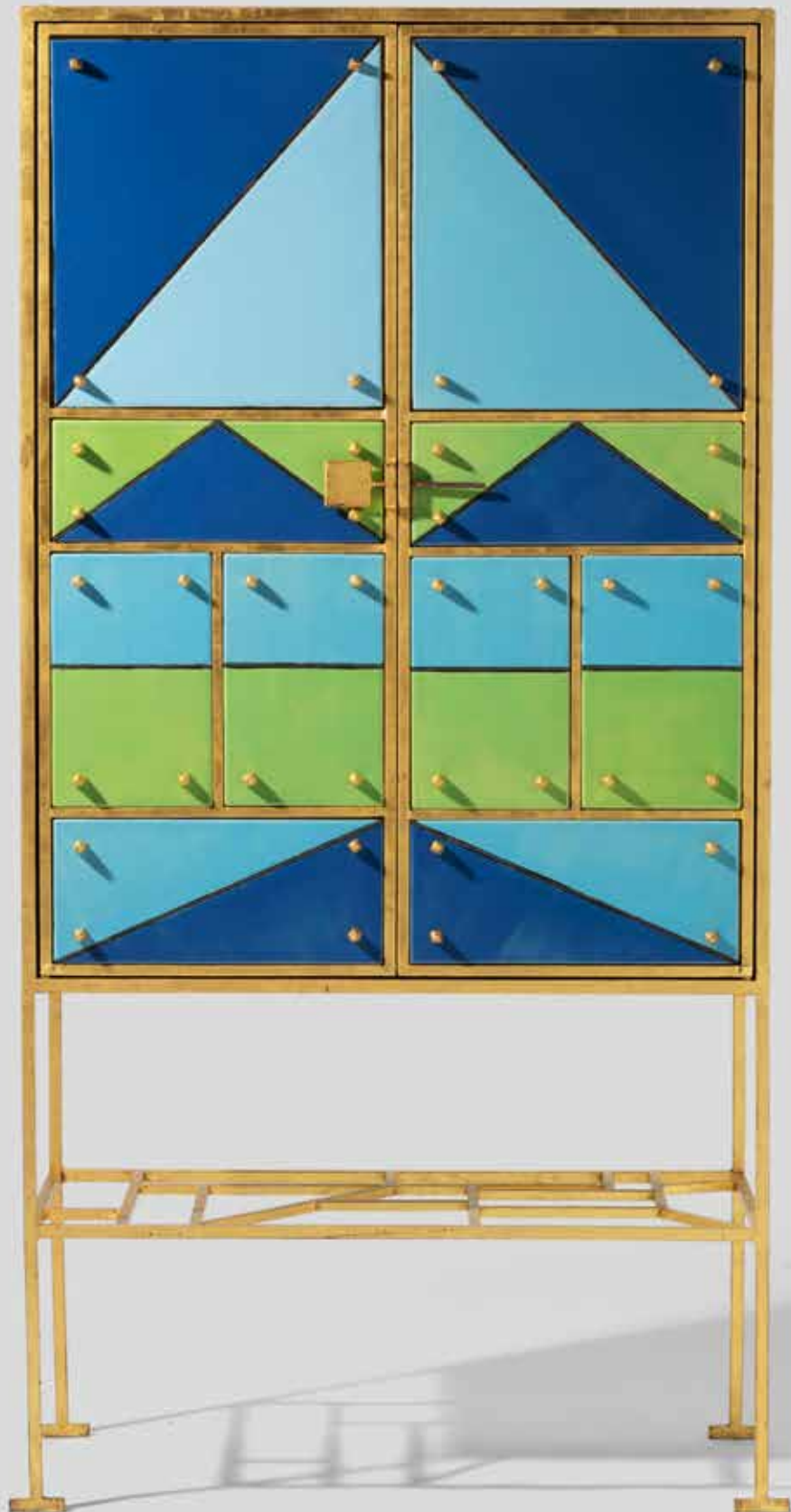
gilt iron, glazed ceramic, ebonized wood, stamped 'EG' and 'P. BASSE FERRONIER POUR EG'

height 63 1/4in (160cm); width 31 1/2in (80cm); depth 17in (43cm)

US\$25,000 - 35,000



147



149^W

WILLIAM SAWAYA (BORN 1948)

Darwish-Sitzobjekt

1999

cast patinated bronze

height 34in (86.3cm); diameter 54in (137.1cm)

US\$20,000 - 30,000



150^W

ROBERTO RIDA (BORN 1953)

Unique Minosse Cabinet

2016

maple, brass, applied with period mirror glass
by Barovier & Toso and Seguso, branded
'R.G. RIDA'

height 60 1/4in (153cm); width 32 1/4in
(82cm); depth 16 1/4in (41cm)

US\$25,000 - 35,000



151

CHRIS KNIGHT (BORN 1964)

Nurture

2009

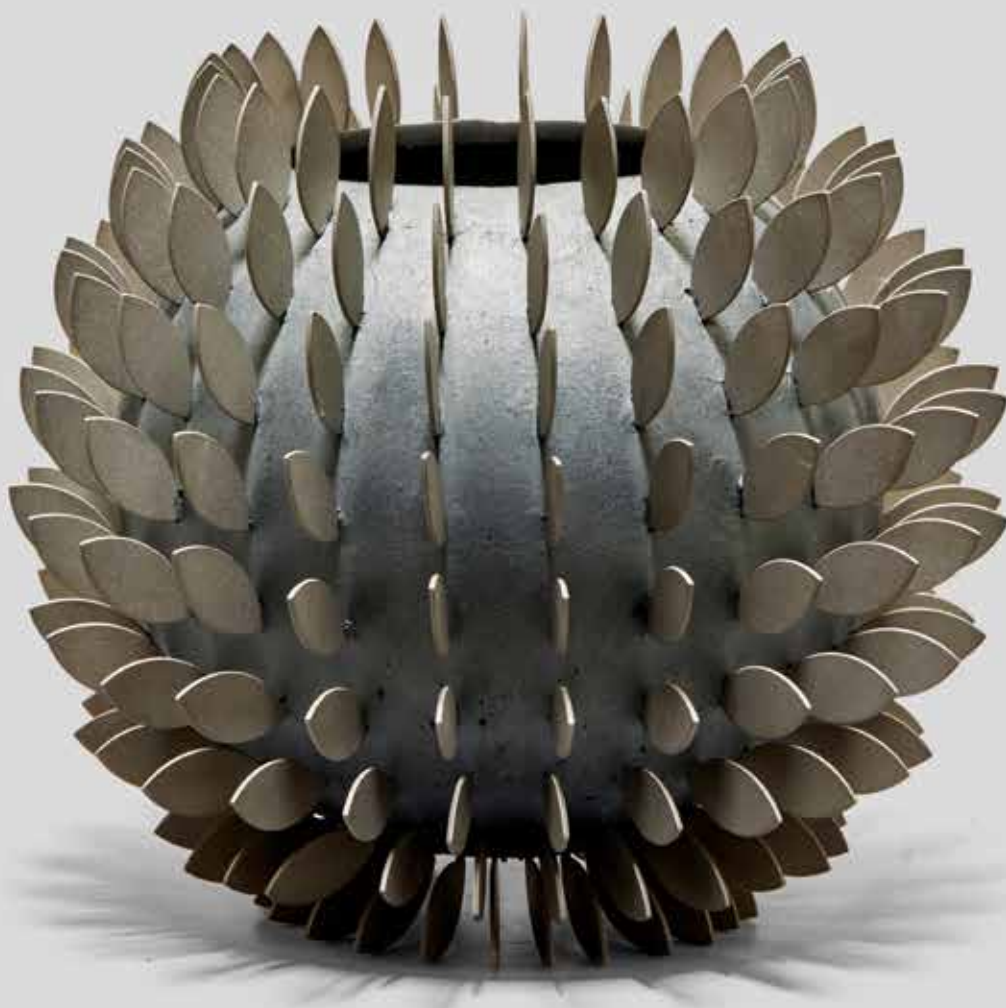
cast silver and stainless steel, with stamped makers mark, Sheffield
assay mark, and '925' for sterling silver
*height 7in (17.8 cm); diameter 7 1/3in (18.6 cm); approximate weight
81 oz (2296 gram)*

US\$8,000 - 12,000

The present work was executed in 2009.

Provenance

Collection of the Artist, Sheffield, United Kingdom



152

KEVIN GREY (BORN 1967)

Cygnus

2016

sterling silver, with the makers' mark, Birmingham assay mark, lion passant and stamped '925' to the base

height 7in (17.8cm); width 21 1/4in (54cm); depth 18 1/2in (47cm)

approximate total weight 304 oz. (8640g)

US\$30,000 - 50,000

The present lot was executed in 2016.

Provenance

Collection of the Artist, Birmingham, United Kingdom



153^W

**STANISLAV LIBENSKÝ (1921-2002) AND JAROSLAVA
BRYCHTOVÁ (BORN 1924)**

Rhomboid Head

1991

cast glass, engraved signature and dated

height 19 3/8in (49.2cm); width 22 1/8in (56.2cm); depth 9 1/4in
(23.5cm)

US\$15,000 - 20,000

Provenance

Habatat Galleries, Royal Oak, Michigan

Private Collection, Chicago



154

WILLIAM MORRIS (BORN 1957)

Ceremonial Pappas

2002

hand-blown glass, enameled steel, engraved 'William Morris 2002'
height 69in (175cm); width 16in (41cm); depth 16in (41cm)

US\$30,000 - 50,000

Provenance

Lee Silton, Massachusetts, acquired circa 2002

Thence by descent



Bonhams

AUCTIONEERS SINCE 1793



Nature & Form

Highlights from the Estate of Alexandre Noll

New York | December 12, 2019

INQUIRIES

+1 (212) 710 1306
design.us@bonhams.com
bonhams.com/design

ALEXANDRE NOLL (1890-1970)

Important Bar
circa 1947-48
Madagascan rosewood, carved 'ANOLL'
height 50 3/4in (129cm); width 17 1/4in (44cm)
\$300,000 - 500,000

Bonhams

AUCTIONEERS SINCE 1793



A Wonderful Life: Photographs from the Peter Fetterman Collection

New York | December 17, 2019

PREVIEW

December 7 - 16

INQUIRIES

+1 (917) 206 1653
laura.paterson@bonhams.com
[bonhams.com/photos](https://www.bonhams.com/photos)

ELLIOTT ERWITT (BORN 1928)

New York City, 1955
Gelatin silver print
17 1/2 x 11 1/4in
\$4,000 - 6,000

Bonhams

AUCTIONEERS SINCE 1793



Private Collection of Lalique Glass

Montpelier Street, London | 19 February 2020

ENQUIRIES

+44 (0) 20 7393 3858
mark.oliver@bonhams.com
bonhams.com

A 'NANKING' VASE BY RENÉ LALIQUE
Sold recently for £36,475

Conditions of sale

The following Conditions of Sale, as amended by any published or posted notices or verbal announcements during the sale, constitute the entire terms and conditions on which property listed in the catalog shall be offered for sale or sold by Bonhams & Butterfields Auctioneers Corp. and any consignor of such property for whom Bonhams acts as agent. By participating in this sale, you agree to be bound by these terms and conditions.

If live online bidding is available for the subject auction, additional terms and conditions of sale relating to online bidding will apply; see www.bonhams.com/WebTerms for the supplemental terms. As used herein, "Bonhams," "we" and "us" refer to Bonhams & Butterfields Auctioneers Corp.

1. As used herein, the term "bid price" means the price at which a lot is successfully knocked down to the buyer. The term "purchase price" means the aggregate of (a) the bid price, (b) a PREMIUM retained by us and payable by the buyer (the "buyer's premium"), EQUAL TO 27.5% OF THE FIRST \$3,000 OF THE BID PRICE, 25% OF THE AMOUNT OF THE BID PRICE ABOVE \$3,000 UP TO AND INCLUDING \$400,000, 20% OF THE AMOUNT OF THE BID PRICE ABOVE \$400,000 UP TO AND INCLUDING \$4,000,000, AND 13.9% OF THE AMOUNT OF THE BID PRICE OVER \$4,000,000, and (c) unless the buyer is exempt by law from the payment thereof, any Alabama, Arizona, California, Colorado, Connecticut, Florida, Georgia, Hawaii, Idaho, Illinois, Iowa, Indiana, Kentucky, Louisiana, Maine, Massachusetts, Michigan, Minnesota, Nevada, New Jersey, New York, North Carolina, Ohio, Pennsylvania, Rhode Island, Texas, Utah, Virginia, Washington, D.C., Washington, Wisconsin, Wyoming or other state or local sales tax (or compensating use tax) and other applicable taxes. With regard to New York sales tax, please refer to the "Sales and Use Tax" section of these Conditions of Sale.

2. In order to bid at the sale, prospective bidders must submit to Bonhams a completed bidder registration form (appearing at the end of this catalog) and any other requested information or references. New bidders and bidders who have not recently updated their registration information must pre-register to bid at least two business days before the sale. Individuals will be required to provide government-issued proof of identity and proof of address. Entity clients will be required to provide documentation including confirmation of entity registration showing the registered name, confirmation of registered address, documentary proof of officers and beneficial owners, proof of authority to transact on behalf of the entity and government-issued proof of identity for the individual who is transacting on the entity's behalf.

We may also request a financial reference and /or deposit from bidders before approving the bidder registration. In the event a deposit is submitted and you are not the successful bidder, your deposit will be returned to you. If you are the successful bidder, any such deposit will be credited to offset the appropriate portion of the purchase price.

We reserve the right to request further information, including regarding the source of funds, in order to complete bidder identification and registration procedures (including completing any anti-money laundering and/or anti-terrorism financing checks we may require) to our satisfaction. If our bidder identification and registration procedures are not satisfied, we may, in our sole discretion, decline to register any bidder or reject any bid or cancel any sale to such bidder.

Every bidder shall be deemed to act as a principal unless prior to the commencement of the sale there is a written acceptance by Bonhams of a bidder registration form completed and signed by the principal which clearly states that the authorized bidding agent is acting on behalf of the named principal. Absent such written acceptance by Bonhams, any person placing a bid as agent on behalf of another (whether or not such person has disclosed that fact or the identity of the principal) may be jointly and severally liable with the principal under any contract resulting from the acceptance of a bid. Every bidder shall be responsible for

any use of its assigned paddle or bidding account, regardless of the circumstances.

3. You represent and warrant that: (i) you have provided us with true and correct copies of valid identification and proof of residence and, if applicable, financial and/or corporate documents; (ii) neither you, your principal (if applicable, and subject to Bonhams' prior written acceptance pursuant to paragraph 2 above), nor any individual or entity with a beneficial or ownership interest in either or in the purchase transaction is on the Specially Designated Nationals List maintained by the Office of Foreign Assets Control of the U.S. Department of the Treasury nor subject to any other sanctions or embargo program or regulation in effect in the United States, European Union, England and Wales, or other applicable jurisdictions; (iii) if you are acting as an agent for a principal, you have conducted appropriate due diligence into such principal, and agree that Bonhams shall be entitled to rely upon such due diligence, you will retain adequate records evidencing such due diligence for a period of five (5) years following the consummation of the sale, and will make these records available for inspection upon Bonhams' request; (iv) neither the purchase transaction (including your bidding activity) nor the purchase funds are connected with nor derive from any criminal activity, and they are not designed to nor have they or shall they, violate the banking, anti-money laundering, or currency transfer laws or other regulations (including without limitation, import-export laws) of any country or jurisdiction, or further any other unlawful purpose, including without limitation collusion, anti-competitive activity, tax evasion or tax fraud.

You acknowledge and agree that we may rely upon the accuracy and completeness of the foregoing warranties.

4. On the fall of the auctioneer's hammer, the highest bidder shall have purchased the offered lot in accordance and subject to compliance with all of the conditions set forth herein and (a) assumes full risk and responsibility therefor, (b) if requested will sign a confirmation of purchase, and (c) will pay the purchase price in full or such part as we may require for all lots purchased. No lot may be transferred.

Unless otherwise agreed, payment in good, cleared funds is due and payable within five (5) business days following the auction sale. Whenever the buyer pays only a part of the total purchase price for one or more lots purchased, we may apply such payments, in our sole discretion, to the lot or lots we choose. Payment will not be deemed made in full until we have received good, cleared funds for all amounts due. Title in any purchased property will not pass until full and final payment has been received by Bonhams. Accounts must be settled in full before property is released to the buyer. In the event property is released earlier, such release will not affect the passing of title or the buyer's obligation to timely remit full payment.

We reserve the right to refuse to accept payment from a source other than the registered bidder or buyer of record. Once an invoice is issued, we cannot change the buyer's name on an invoice.

Payment for purchases must be made in the currency in which the sale is conducted and may be made in or by (a) cash, up to the amount of US \$5,000 (whether by single or multiple related payments), or the equivalent in the currency in which the sale is conducted, (b) cashier's check or money order, (c) personal check with approved credit drawn on a U.S. bank, (d) wire transfer or other immediate bank transfer, or (e) Visa, MasterCard, American Express or Discover credit, charge or debit card, provided that the registered bidder or buyer's name is printed on the card. A processing fee will be assessed on any returned checks.

To the fullest extent permitted by applicable law, the buyer grants us a security interest in the property, and we may retain as collateral security for the buyer's obligations to us, any property and all monies held or received by us for the account of the buyer, in our possession. We also retain all rights of a secured party under the California Commercial

Code, and you agree that we may file financing statements without your signature. If the foregoing conditions or any other applicable conditions herein are not complied with, in addition to all other remedies available to us and the consignor by law, we may at our election: (a) hold the buyer liable for the full purchase price and any late charges, collection costs, attorneys' fees and costs, expenses and incidental damages incurred by us or the consignor arising out of the buyer's breach; (b) cancel the sale, retaining as liquidated damages all payments made by the buyer; and/or (c) cancel the sale and/or resell the purchased property, at public auction and/or by private sale, and in such event the buyer shall be liable for the payment of all consequential damages, including any deficiencies or monetary losses, and all costs and expenses of such sale or sales, our commissions at our standard rates, all other charges due hereunder, all late charges, collection costs, attorneys' fees and costs, expenses and incidental damages. In addition, where two or more amounts are owed in respect of different transactions by the buyer to us, to Bonhams 1793 Limited and/or to any of our other affiliates, subsidiaries or parent companies worldwide within the Bonhams Group, we reserve the right to apply any monies paid in respect of a transaction to discharge any amount owed by the buyer. If all fees, commissions, premiums, bid prices and other sums due to us from the buyer are not paid promptly as provided in these Conditions of Sale, we reserve the right to impose a finance charge equal to 1.5% per month (or, if lower, the maximum nonusurious rate of interest permitted by applicable law), on all amounts due to us beginning on the 31st day following the sale until payment is received, in addition to other remedies available to us by law.

5. We reserve the right to withdraw any property and to divide and combine lots at any time before such property's auction. Unless otherwise announced by the auctioneer at the time of sale, all bids are per lot as numbered in the catalog and no lots shall be divided or combined for sale.

6. We reserve the right to reject a bid from any bidder, to split any bidding increment, and to advance the bidding in any manner the auctioneer may decide. In the event of any dispute between bidders, or in the event the auctioneer doubts the validity of any bid, the auctioneer shall have sole and final discretion either to determine the successful bidder, re-open the bidding, or to cancel the sale and re-offer and resell the article in dispute. If any dispute arises after the sale, our sales records shall be conclusive in all respects.

We further reserve the right to cancel the sale of any property if (i) you are in breach of your representations and warranties as set forth in paragraph 3 above; (ii) we, in our sole discretion, determine that such transaction might be unlawful or might subject Bonhams or the consignor to any liability to any third party; or (iii) there are any other grounds for cancellation under these Conditions of Sale.

7. If we are prevented by fire, theft or any other reason whatsoever from delivering any property to the buyer or a sale otherwise cannot be completed, our liability shall be limited to the sum actually paid therefor by the buyer and shall in no event include any compensatory, incidental or consequential damages.

8. All lots in the catalog are offered subject to a reserve unless otherwise indicated in the catalog. The reserve is the confidential minimum bid price at which such lot will be sold and it does not exceed the low estimate value for the lot. If a lot is offered subject to a reserve, we may implement such reserve by bidding on behalf of the consignor, whether by opening bidding or continuing bidding in response to other bidders until reaching the reserve. If we have an interest in an offered lot and the proceeds therefrom other than our commissions, we may bid up to the reserve to protect such interest. If the auctioneer determines that any opening or subsequent bid is below the reserve for a lot, (s)he may reject such opening bid and withdraw the item from sale. **CONSIGNORS ARE NOT ALLOWED TO BID ON THEIR OWN ITEMS.**

Conditions of sale - continued

9. Other than as provided in the Limited Right of Rescission with respect to identification of authorship, all property is sold "AS IS" and any statements contained in the catalog or in any advertisement, bill of sale, announcement, condition report, invoice or elsewhere as to period, culture, source, origin, media, measurements, size, quality, rarity, provenance, importance, exhibition and literature of historical relevance, merchantability, fitness for a particular purpose, or physical condition ARE QUALIFIED STATEMENTS OF OPINION AND NOT REPRESENTATIONS, WARRANTIES, OR ASSUMPTION OF LIABILITY. Neither Bonhams nor the consignor shall be responsible for any error or omission in the catalog description of any property. No employee or agent of Bonhams is authorized to make on our behalf or on that of the consignor any representation or warranty, oral or written, with respect to any property.

10. All purchased property shall be removed from the premises at which the sale is conducted by the date(s) and time(s) set forth in the "Buyer's Guide" portion of this catalog. If not so removed, daily storage fees will be payable to us by the buyer as set forth therein. We reserve the right to transfer property not so removed to an offsite warehouse at the buyer's risk and expense, as set forth in more detail in the "Buyer's Guide." Packing and handling of purchased lots are the responsibility of the buyer and at the buyer's entire risk, as are the identification, application for, and cost(s) of obtaining of any necessary export, import, restricted material (e.g. endangered species) or other permit for such lots.

For an additional fee, Bonhams may provide packing and shipping services for certain items as noted in the "Buyer's Guide" section of the catalog.

11. The copyright in the text of the catalog and the photographs, digital images and illustrations of lots in the catalog belong to Bonhams or our licensors. You will not reproduce or permit anyone else to reproduce such text, photographs, digital images or illustrations without our prior written consent. Bonhams and the consignor make no representation or warranty as to whether the buyer acquires any copyrights on the purchase of an item of Property.

12. Bonhams may, in our discretion, as a courtesy and free of charge, execute bids on your behalf if so instructed by you, provided that neither Bonhams nor our employees or agents will be liable for any error or default (whether human or otherwise) in doing so or for failing to do so. Without limiting the foregoing, Bonhams (including our agents and employees) shall not be responsible for any problem relating to telephone, online, or other bids submitted remotely through any means, including without limitation, any telecommunications or internet fault or failure, or breakdown or problems with any devices or online platforms, including third-party online platforms, regardless of whether such issue arises with our, your, or such third-party's technology, equipment, or connection. By participating at auction by telephone or online, bidders expressly consent to the recording of their bidding sessions and related communications with Bonhams and our employees and agents, and acknowledge their acceptance of these Conditions of Sale as well as any additional terms and conditions applicable to any such bidding platform or technology.

13. These Conditions of Sale shall bind the successors and assigns of all bidders and buyers and inure to the benefit of our successors and assigns. No waiver, amendment or modification of the terms hereof (other than posted notices or oral announcements during the sale) shall bind us unless specifically stated in writing and signed by us. No act or omission of Bonhams, its employees or agents, nor any failure thereof to exercise any remedy hereunder, shall operate or be deemed to operate as a waiver of Bonhams' rights under these Conditions of Sale. If any part of these Conditions of Sale is for any reason invalid or unenforceable, the rest shall remain valid and enforceable.

14. These Conditions of Sale and the buyer's and our respective rights and obligations hereunder shall be governed

by and construed and enforced in accordance with the laws of the State of California. Any dispute, controversy or claim arising out of or relating to this agreement, or the breach, termination or validity thereof, brought by or against Bonhams (but not including claims brought against the consignor by the buyer of lots consigned hereunder) shall be resolved by the procedures set forth below.

15. You accept and agree that Bonhams will hold and process your personal information and may share and use it as required by law and as described in, and in line with Bonhams' Privacy Policy, available at website at www.bonhams.com/legals/. If you desire access, update, or restriction to the use of your personal information, please email data.protection@bonhams.com.

SALES AND USE TAX

New York sales tax is charged on the hammer price, buyer's premium and any other applicable charges on any property collected or delivered in New York State, regardless of the state or country in which the buyer resides or does business. Buyers who make direct arrangements for collection by a shipper who is considered a "private" or "contract" carrier by the New York Department of Taxation and Finance will be charged New York sales tax, regardless of the destination of the property. Property collected for delivery to a destination outside of New York by a shipper who is considered a "common carrier" by the New York Department of Taxation and Finance (e.g. United States Postal Service, United Parcel Service, and FedEx) is not subject to New York sales tax, but if it is delivered into any state in which Bonhams is registered or otherwise conducts business sufficient to establish a nexus, Bonhams may be required by law to collect and remit the appropriate sales tax in effect in such state. Property collected for delivery outside of the United States by a freight forwarder who is registered with the Transportation Security Administration ("TSA") is not subject to New York sales tax.

MEDIATION AND ARBITRATION PROCEDURES

(a) Within 30 days of written notice that there is a dispute, the parties or their authorized and empowered representatives shall meet by telephone and/or in person to mediate their differences. If the parties agree, a mutually acceptable mediator shall be selected and the parties will equally share such mediator's fees. The mediator shall be a retired judge or an attorney familiar with commercial law and trained in or qualified by experience in handling mediations. Any communications made during the mediation process shall not be admissible in any subsequent arbitration, mediation or judicial proceeding. All proceedings and any resolutions thereof shall be confidential, and the terms governing arbitration set forth in paragraph (c) below shall govern.

(b) If mediation does not resolve all disputes between the parties, or in any event no longer than 60 days after receipt of the written notice of dispute referred to above, the parties shall submit the dispute for binding arbitration before a single neutral arbitrator. Such arbitrator shall be a retired judge or an attorney familiar with commercial law and trained in or qualified by experience in handling arbitrations. Such arbitrator shall make all appropriate disclosures required by law. The arbitrator shall be drawn from a panel of a national arbitration service agreed to by the parties, and shall be selected as follows: (i) If the national arbitration service has specific rules or procedures, those rules or procedures shall be followed; (ii) If the national arbitration service does not have rules or procedures for the selection of an arbitrator, the arbitrator shall be an individual jointly agreed to by the parties. If the parties cannot agree on a national arbitration service, the arbitration shall be conducted by the American Arbitration Association, and the arbitrator shall be selected in accordance with the Rules of the American Arbitration Association. The arbitrator's award shall be in writing and shall set forth findings of fact and legal conclusions.

(c) Unless otherwise agreed to by the parties or provided by the published rules of the national arbitration service:

(i) the arbitration shall occur within 60 days following the selection of the arbitrator;

(ii) the arbitration shall be conducted in the designated location, as follows: (A) in any case in which the subject auction by Bonhams took place or was scheduled to take place in the State of New York or Connecticut or the Commonwealth of Massachusetts, the arbitration shall take place in New York City, New York; (B) in all other cases, the arbitration shall take place in the city of San Francisco, California; and

(iii) discovery and the procedure for the arbitration shall be as follows:

(A) All arbitration proceedings shall be confidential;

(B) The parties shall submit written briefs to the arbitrator no later than 15 days before the arbitration commences;

(C) Discovery, if any, shall be limited as follows: (i) Requests for no more than 10 categories of documents, to be provided to the requesting party within 14 days of written request thereof; (ii) No more than two (2) depositions per party, provided however, the deposition(s) are to be completed within one (1) day; (iii) Compliance with the above shall be enforced by the arbitrator in accordance with California law;

(D) Each party shall have no longer than eight (8) hours to present its position. The entire hearing before the arbitrator shall not take longer than three (3) consecutive days;

(E) The award shall be made in writing no more than 30 days following the end of the proceeding. Judgment upon the award rendered by the arbitrator may be entered by any court having jurisdiction thereof.

To the fullest extent permitted by law, and except as required by applicable arbitration rules, each party shall bear its own attorneys' fees and costs in connection with the proceedings and shall share equally the fees and expenses of the arbitrator.

LIMITED RIGHT OF RESCISSION

If within one (1) year from the date of sale, the original buyer (a) gives written notice to us alleging that the identification of Authorship (as defined below) of such lot as set forth in the **BOLD TYPE** heading of the catalog description of such lot (as amended by any saleroom notices or verbal announcements during the sale) is not substantially correct based on a fair reading of the catalog (including the terms of any glossary contained therein), and (b) within 10 days after such notice returns the lot to us in the same condition as at the time of sale, and (c) establishes the allegation in the notice to our satisfaction (including by providing one or more written opinions by recognized experts in the field, as we may reasonably require), then the sale of such lot will be rescinded and, unless we have already paid to the consignor monies owed him in connection with the sale, the original purchase price will be refunded.

If, prior to receiving such notice from the original buyer alleging such defect, we have paid the consignor monies owed him in connection with the sale, we shall pay the original buyer the amount of our commissions, any other sale proceeds to which we are entitled and applicable taxes received from the buyer on the sale and make demand on the consignor to pay the balance of the original purchase price to the original buyer. Should the consignor fail to pay such amount promptly, we may disclose the identity of the consignor and assign to the original buyer our rights against the consignor with respect to the lot the sale of which is sought to be rescinded. Upon such disclosure and assignment, any liability of Bonhams as consignor's agent with respect to said lot shall automatically terminate.

The foregoing limited right of rescission is available to the original buyer only and may not be assigned to or relied

Conditions of sale - continued

upon by any subsequent transferee of the property sold. The buyer hereby accepts the benefit of the consignor's warranty of title and other representations and warranties made by the consignor for the buyer's benefit. Nothing in this section shall be construed as an admission by us of any representation of fact, express or implied, obligation or responsibility with respect to any lot. **THE BUYER'S SOLE AND EXCLUSIVE REMEDY AGAINST BONHAMS FOR ANY REASON WHATSOEVER IS THE LIMITED RIGHT OF RESCISSION DESCRIBED IN THIS SECTION.**

"Authorship" means only the identity of the creator, the period, culture and source or origin of the lot, as the case may be, as set forth in the **BOLD TYPE** heading of the print catalog entry. The right of rescission does not extend to: (a) works of art executed before 1870 (unless these works are determined to be counterfeits created since 1870), as this is a matter of current scholarly opinion which can change; (b) titles, descriptions, or other identification of offered lots, which information normally appears in lower case type below the **BOLD TYPE** heading identifying the Authorship; (c) Authorship of any lot where it was specifically mentioned that there exists a conflict of specialist or scholarly opinion regarding the Authorship of the lot at the time of sale; (d) Authorship of any lot which as of the date of sale was in accordance with the then generally-accepted opinion of scholars and specialists regarding the same; or (e) the identification of periods or dates of creation in catalog descriptions which may be proven inaccurate by means of scientific processes that are not generally accepted for use until after publication of the catalog in which the property is offered or that were unreasonably expensive or impractical to use at the time of such publication.

LIMITATION OF LIABILITY

EXCEPT AS EXPRESSLY PROVIDED ABOVE, ALL PROPERTY IS SOLD "AS IS." NEITHER BONHAMS NOR THE CONSIGNOR MAKES ANY REPRESENTATION

OR WARRANTY, EXPRESS OR IMPLIED, AS TO THE MERCHANTABILITY, FITNESS OR CONDITION OF THE PROPERTY OR AS TO THE CORRECTNESS OF DESCRIPTION, GENUINENESS, ATTRIBUTION, PROVENANCE OR PERIOD OF THE PROPERTY OR AS TO WHETHER THE BUYER ACQUIRES ANY COPYRIGHTS OR OTHER INTELLECTUAL PROPERTY RIGHTS IN LOTS SOLD OR AS TO WHETHER A WORK OF ART IS SUBJECT TO THE ARTIST'S MORAL RIGHTS OR OTHER RESIDUAL RIGHTS OF THE ARTIST. THE BUYER EXPRESSLY ACKNOWLEDGES AND AGREES THAT IN NO EVENT SHALL BONHAMS BE LIABLE FOR ANY DAMAGES INCLUDING, WITHOUT LIMITATION, ANY COMPENSATORY, INCIDENTAL OR CONSEQUENTIAL DAMAGES. IN NO EVENT SHALL THE AGGREGATE LIABILITY OF BONHAMS AND ITS CONSIGNOR TO A PURCHASER EXCEED THE PURCHASE PRICE ACTUALLY PAID FOR A DISPUTED ITEM OF PROPERTY.

Seller's guide

SELLING AT AUCTION

Bonhams can help you every step of the way when you are ready to sell art, antiques and collectible items at auction. Our regional offices and representatives throughout the US are available to service all of your needs. Should you have any further questions, please visit our website at www.bonhams.com/us for more information or call our Client Services Department at +1 (212) 644 9001.

AUCTION ESTIMATES

The first step in the auction process is to determine the auction value of your property. Bonhams' world-renowned specialists will evaluate your special items at no charge and in complete confidence. You can obtain an auction estimate in many ways:

- Attend one of our Auction Evaluation Events held regularly at our galleries and in other major metropolitan areas. The updated schedule for Bonhams Auction Evaluation Events is available at www.bonhams.com/us.
- Call our Client Services Department to schedule a private appointment at one of our galleries. If you have a large collection, our specialists can travel, by appointment, to evaluate your property on site.
- Send clear photographs to us of each individual item, including item dimensions and other pertinent information with each picture. Photos should be sent to Bonhams' address in envelopes marked as "photo auction estimate". Alternatively, you can submit your request using our online form at www.bonhams.com/us. Digital images may be attached to the form. Please limit your images to no more than five (5) per item.

CONSIGNING YOUR PROPERTY

After you receive an estimate, you may consign your property to us for sale in the next appropriate auction. Our staff assists you throughout the process, arranging transportation of your items to our galleries (at the consignor's expense), providing a detailed inventory of your consignment, and reporting the prices realized for each lot. We provide secure storage for your property in our warehouses and all items are insured throughout the auction process. You will receive payment for your property approximately 35 days after completion of sale.

Sales commissions vary with the potential auction value of the property and the particular auction in which the property is offered. Please call us for commission rates.

PROFESSIONAL APPRAISAL SERVICES

Bonhams' specialists conduct insurance and fair market value appraisals for private collectors, corporations, museums, fiduciaries and government entities on a daily basis. Insurance appraisals, used for insurance purposes, reflect the cost of replacing property in today's retail market. Fair market value appraisals are used for estate, tax and family division purposes and reflect prices paid by a willing buyer to a willing seller.

When we conduct a private appraisal, our specialists will prepare a thorough inventory listing of all your appraised property by category. Valuations, complete descriptions and locations of items are included in the documentation.

Appraisal fees vary according to the nature of the collection, the amount of work involved, the travel distance, and whether the property is subsequently consigned for auction.

Our appraisers are available to help you anywhere and at any time. Please call our Client Services Department to schedule an appraisal.

ESTATE SERVICES

Since 1865, Bonhams has been serving the needs of fiduciaries – lawyers, trust officers, accountants and executors – in the disposition of large and small estates. Our services are specially designed to aid in the efficient appraisal and disposition of fine art, antiques, jewelry, and collectibles. We offer a full range of estate services, ranging from flexible financial terms to tailored accounting for heirs and their agents to world-class marketing and sales support.

For more information or to obtain a detailed Trust and Estates package, please visit our website at www.bonhams.com/us or contact our Client Services Department.

Buyer's Guide

BIDDING & BUYING AT AUCTION

Whether you are an experienced bidder or an enthusiastic novice, auctions provide a stimulating atmosphere unlike any other. Bonhams previews and sales are free and open to the public. As you will find in these directions, bidding and buying at auction is easy and exciting. Should you have any further questions, please visit our website at www.bonhams.com or call our Client Services Department at +1 (212) 644 9001.

Catalogs

Before each auction we publish illustrated catalogs. Our catalogs provide descriptions and estimated values for each "lot." A lot may refer to a single item or to a group of items auctioned together. The catalogs also include the dates and the times for the previews and auctions. We offer our catalogs by subscription or by single copy. For information on subscribing to our catalogs, you may refer to the subscription form in this catalog, call our Client Services Department, or visit our website at www.bonhams.com/us.

Previews

Auction previews are your chance to inspect each lot prior to the auction. We encourage you to look closely and examine each object on which you may want to bid so that you will know as much as possible about it. Except as expressly set forth in the Conditions of Sale, items are sold "as is" and with all faults; illustrations in our catalogs, website and other materials are provided for identification only. At the previews, our staff is always available to answer your questions and guide you through the auction process. Condition reports may be available upon request.

Estimates

Bonhams catalogs include low and high value estimates for each lot, exclusive of the buyer's premium and tax. The estimates are provided as an approximate guide to current market value based primarily on previous auction results for comparable pieces, and should not be interpreted as a representation or prediction of actual selling prices. They are determined well in advance of a sale and are subject to revision. Please contact us should you have any questions about value estimates.

Reserves

Unless indicated by the σ symbol next to the lot number, which denotes no reserve, all lots in the catalog are subject to a reserve. The reserve is the minimum auction price that the consignor is willing to accept for a lot. This amount is confidential and does not exceed the low estimate value.

Auction House's Interest in Property Offered at Auction

On occasion, Bonhams may offer property in which it has an ownership interest in whole or in part or otherwise has an economic interest. Such property, if any, is identified in the catalog with a \blacktriangle symbol next to the lot number(s).

Bonhams may also offer property for a consignor that has been guaranteed a minimum price for its property by Bonhams or jointly by Bonhams and a third party. Bonhams and any third parties providing a guarantee may benefit financially if the guaranteed property is sold successfully and may incur a financial loss if its sale is not successful. Such property, if any, is identified in the catalog with a \circ symbol next to the lot number(s).

Bidding at Auction

At Bonhams, you can bid in many ways: in person, via absentee bid, over the phone, or via Bonhams' live online bidding facility. Absentee bids can be submitted in person, online, via fax or via email.

Valid Bonhams client accounts are required to participate in bidding activity. You can obtain registration information online, at the reception desk or by calling our Client Services Department.

By bidding at auction, whether in person or by agent, by absentee bid, telephone, online or other means, the buyer or bidder agrees to be bound by the Conditions of Sale.

Lots are auctioned in consecutive numerical order as they appear in the catalog. Bidding normally begins below the low estimate. The auctioneer will accept bids from interested parties present in the saleroom, from telephone bidders, and

from absentee bidders who have left written bids in advance of the sale. The auctioneer may also execute bids on behalf of the consignor by placing responsive or consecutive bids for a lot up to the amount of the reserve, but never above it.

We assume no responsibility for failure to execute bids for any reason whatsoever.

In Person

If you are planning to bid at auction for the first time, you will need to register at the reception desk in order to receive a numbered bid card. To place a bid, hold up your card so that the auctioneer can clearly see it. Decide on the maximum auction price that you wish to pay, exclusive of buyer's premium and tax, and continue bidding until your bid prevails or you reach your limit. If you are the successful bidder on a lot, the auctioneer will acknowledge your paddle number and bid amount.

Absentee Bids

As a service to those wishing to place bids, we may at our discretion accept bids without charge in advance of auction online or in writing on bidding forms available from us. "Buy" bids will not be accepted; all bids must state the highest bid price the bidder is willing to pay. Our auction staff will try to bid just as you would, with the goal of obtaining the item at the lowest bid price possible. In the event identical bids are submitted, the earliest bid submitted will take precedence. Absentee bids shall be executed in competition with other absentee bids, any applicable reserve, and bids from other auction participants. A friend or agent may place bids on your behalf, provided that we have received your written authorization prior to the sale. Absentee bid forms are available in our catalogs, online at www.bonhams.com/us, at offsite auction locations, and at our San Francisco, Los Angeles and New York galleries.

By Telephone

Under special circumstances, we can arrange for you to bid by telephone. To arrange for a telephone bid, please contact our Client Services Department a minimum of 24 hours prior to the sale.

Online

We offer live online bidding for most auctions and accept absentee bids online for all our auctions. Please visit www.bonhams.com/us for details.

Bid Increments

Bonhams generally uses the following increment multiples as bidding progresses:

\$50-200.....	by \$10s
\$200-500.....	by \$20/50/80s
\$500-1,000.....	by \$50s
\$1,000-2,000.....	by \$100s
\$2,000-5,000.....	by \$200/500/800s
\$5,000-10,000.....	by \$500s
\$10,000-20,000.....	by \$1,000s
\$20,000-50,000.....	by \$2,000/5,000/8,000s
\$50,000-100,000.....	by \$5,000s
\$100,000-200,000.....	by \$10,000s
above \$200,000.....	at auctioneer's discretion

The auctioneer may split or reject any bid at any time at his or her discretion as outlined in the Conditions of Sale.

Currency Converter

Solely for the convenience of bidders, a currency converter may be provided at Bonhams' auctions. The rates quoted for conversion of other currencies to U.S. Dollars are indications only and should not be relied upon by a bidder, and neither Bonhams nor its agents shall be responsible for any errors or omissions in the operation or accuracy of the currency converter.

Buyer's Premium

A buyer's premium is added to the winning bid price of each individual lot purchased, at the rates set forth in the Conditions of Sale. The winning bid price plus the premium constitute the purchase price for the lot. Applicable sales taxes are computed based on this figure, and the total becomes your final purchase price.

Unless specifically illustrated and noted, fine art frames are not included in the estimate or purchase price. Bonhams accepts no liability for damage or loss to frames during storage or shipment.

All sales are final and subject to the Conditions of Sale found in our catalogs, on our website, and available at the reception desk.

Payment

All buyers are asked to pay and pick up by 3pm on the business day following the auction. Payment may be made to Bonhams by cash, checks drawn on a U.S. bank, money order, wire transfer, or by Visa, MasterCard, American Express or Discover credit or charge card or debit card. All items must be paid for within 5 business days of the sale. Please note that payment by personal or business check may result in property not being released until purchase funds clear our bank. For payments sent by mail, please remit to Cashier Department, 220 San Bruno Avenue, San Francisco, CA 94103.

Sales Tax

Residents of states listed in Paragraph 1 of the Conditions of Sale must pay applicable sales tax. Other state or local taxes (or compensation use taxes) may apply. Sales tax will be automatically added to the invoice unless a valid resale number has been furnished or the property is shipped via common carrier to destinations outside the states listed in the Conditions of Sale. If you wish to use your resale license please contact Cashiers for our form.

Shipping & Removal

Bonhams can accommodate shipping for certain items. Please contact our Cashiers Department for more information or to obtain a quote. Carriers are not permitted to deliver to PO boxes.

International buyers are responsible for all import/export customs duties and taxes. An invoice stating the actual purchase price will accompany all international purchases.

Collection of Purchases

Please arrange for the packing and transport of your purchases prior to collection at our office. If you are sending a third party shipper, please request a release form from us and return it to +1 (212) 644 9009 prior to your scheduled pickup. To schedule collection of purchases, please call +1 (212) 644 9001.

Handling and Storage Charges

Please note that our office has requirement for freight elevator usage. Please contact us to schedule an elevator appointment for pickup of any large or awkward items. On Tuesday 14 January oversized lots (noted as W next to the lot number and/or listed on page 155) will be sent to Door to Door Services where transfer and full value protection fees will be immediately applicable. Storage charges will begin accruing for any lots not collected within 5 business days of the date of auction. All other sold lot will be retained in Bonhams Gallery until Thursday 23 January. Collection of lots will be by appointment only. Please call +1 (212) 644 9001 at least 24 hours in advance to make an appointment.

Storage charges of \$5 per lot, per day will begin accruing for any lots not collected within 14 calendar days.

Bonhams reserve the right to remove uncollected sold lots to the warehouse of our choice at the buyer's risk and expense. Further transfer, handling, storage and full value protection fees will apply if move to a warehouse of our choice.

Auction Results

All you need is a touch-tone telephone and the lot number. Auction results are usually available on the next business day following the sale or online at www.bonhams.com/us.

IMPORTANT NOTICE TO BUYERS

COLLECTION & STORAGE AFTER SALE

Please note that all oversized lots listed below and marked with a W in the catalogue will be removed to the warehouse of Door to Door Services herein referred to as Door To Door on Tuesday 14 January. Lots not so listed will remain at Bonhams.

W LOTS WILL BE AVAILABLE FOR COLLECTION FROM DOOR TO DOOR BEGINNING AT 9AM ET ON WEDNESDAY 15 JANUARY

Address

Door To Door Services
50 Tannery Rd #8A
Somerville, NJ 08876

Lots will be available for collection 24hrs following transfer to Door to Door every business day from 9am to 5pm ET.

Collections appointments must be booked 24 hours in advance (subject to full payment of all outstanding amounts due to Bonhams and Door To Door) by contacting Door To Door at 1-908-707-0077 ext 2070

HANDLING & STORAGE CHARGES

Please note: For sold lots removed to Door To Door there will be transfer and Full value protection charges but no storage charge due for lots collected by Tuesday 21 January. For sold lots that remain at Bonhams, there will be no storage charge for lots collected within 14 days of the sale date.

The per-lot charges levied by Door To Door Services are as follows (plus any applicable sales tax):

FURNITURE/LARGE OBJECTS

Transfer \$75
Daily storage..... \$10
Full Value Protection
(on Hammer + Premium + tax) 0.3%

SMALL OBJECTS

Transfer \$37.50
Daily storage..... \$5
Full Value Protection
(on Hammer + Premium + tax) 0.3%

Please contact Michael Van Dyke at Door To Door
+1 908 707 0077 ext 2070
+1 908 707 0011 (fax)
quotes@dtusa.com

For more information and estimates on domestic and International shipping Please contact Michael Van Dyke at Door To Door
+1 908 707 0077 ext 2070
+1 908 707 0011 (fax)
quotes@dtusa.com

PAYMENT

All amounts due to Bonhams and all charges due to Door To Door Services must be paid by the time of collection of the property from their warehouse.

TO MAKE PAYMENT IN ADVANCE

Telephone +1 (908) 707 0077 ext 2070 to ascertain the amount due, payable by cash, check, or credit card.

PAYMENT AT TIME OF COLLECTION

May be made by cash, check, or credit card.

Lots will only be released from Door To Door's warehouse upon production of the "Collection Slip" obtained from the Cashier's office at Bonhams.

The removal and/or storage by Door To Door of any lots will be subject to their standard Conditions of Business, copies of which are available at Bonhams.

PLEASE NOTE

Door To Door does not accept liability for damage or loss, due to negligence or otherwise, exceeding the sale price of such goods, or at their option the cost of repairing or replacing the damaged or missing goods.

Door To Door reserves a lien over all goods in their possession for payment of storage and all other charges due them.

Oversized Lots

19	93	121	141
20	94	122	142
21	95	124	144
22	96	127	145
24	97	128	146
30	98	129	147
33	99	130	148
37	102	131	149
38	103	132	150
41	107	133	153
44	108	134	
55	109	135	
89	111	136	
91	113	138	
92	117	140	

Bonhams Specialist Departments

19th Century Paintings

London
Charles O' Brien
+44 20 7468 8360
New York
Madalina Lazen
+1 212 644 9108

20th Century British Art

London
Matthew Bradbury
+44 20 7468 8295

20th Century Fine Art

San Francisco
Sonja Moro
+1 415 694 9002

Aboriginal Art

Australia
Francesca Cavazzini
+61 2 8412 2222

African, Oceanic & Pre-Columbian Art

Los Angeles
Fredric W. Backlar
+1 323 436 5416 •

American Paintings

New York
Jennifer Jacobsen
+1 917 206 1699

Antiquities

London
Francesca Hickin
+44 20 7468 8226

Antique Arms & Armour

London
David Williams
+44 20 7393 3807

Art Collections, Estates & Valuations

London
Harvey Cammell
+44 (0) 20 7468 8340

New York
Sherri Cohen
+1 917 206 1671

Los Angeles
Leslie Wright
+1 323 436 5408
Joseph Francaviglia
+1 323 436 5443

Lydia Ganley
+1 323 436 4496
San Francisco
Victoria Richardson
+1 415 503 3207
Celeste Smith
+1 415 503 3214

Australian Art

Australia
Merryn Schriever
+61 2 8412 2222
Alex Clark
+61 3 8640 4088

Australian Colonial Furniture and Australiana

+61 2 8412 2222

Books, Maps & Manuscripts

London
Matthew Haley
+44 20 7393 3817
New York
Ian Ehling
+1 212 644 9094
Darren Sutherland
+1 212 461 6531

Los Angeles
Catherine Williamson
+1 323 436 5442
San Francisco
Adam Stackhouse
+1 415 503 3266

British & European Glass

London
Fergus Gambon
+44 20 7468 8245

British Ceramics

London
Fergus Gambon
+44 20 7468 8245

California & Western Paintings & Sculpture

Los Angeles
Scot Levitt
+1 323 436 5425
Kathy Wong
+1 323 436 5415
San Francisco
Aaron Bastian
+1 415 503 3241

Carpets

London
Helena Gumley-Mason
+44 20 8393 2615

Chinese & Asian Art

London
Asaph Hyman
+44 20 7468 5888
Rosangela Assennato
+44 20 7393 3883

Edinburgh
Ian Glennie
+44 131 240 2299

New York
Bruce MacLaren
+1 917 206 1677

Los Angeles
Rachel Du
+1 323 436 5587

San Francisco
Dessa Goddard
+1 415 503 3333

Hong Kong
Xibo Wang
+852 3607 0010

Sydney
Yvett Klein
+61 2 8412 2231

Chinese Paintings

Hong Kong
Iris Miao
+852 3607 0011

Clocks

London
James Stratton
+44 20 7468 8364
New York
Jonathan Snellenburg
+1 212 461 6530

Coins & Medals

London
John Millensted
+44 20 7393 3914
Los Angeles
Paul Song
+1 323 436 5455

Entertainment Memorabilia

London
Katherine Schofield
+44 20 7393 3871
Los Angeles
Catherine Williamson
+1 323 436 5442
Dana Hawkes
+1 978 283 1518

European Ceramics

London
Sebastian Kuhn
+44 20 7468 8384

European Paintings

London
Charles O' Brien
+44 20 7468 8360
New York
Madalina Lazen
+1 212 644 9108
Los Angeles
Rocco Rich
+1 323 436 5410

European Sculptures & Works of Art

London
Michael Lake
+44 20 8963 6813

Furniture and Decorative Art

London
Thomas Moore
+44 20 8963 2816
Los Angeles
Angela Past
+1 323 436 5422
Anna Hicks
+1 323 436 5463
San Francisco
Jeffrey Smith
+1 415 215 7385

Greek Art

London
Anastasia Orfanidou
+44 20 7468 8356

Golf Sporting

Memorabilia
Edinburgh
Kevin McGimpsey
Hamish Wilson
+44 131 240 0916

Irish Art

London
Penny Day
+44 20 7468 8366

Impressionist & Modern Art

London
India Phillips
+44 20 7468 8328
New York
Molly Ott Ambler
+1 917 206 1627
Los Angeles
Kathy Wong
+1 323 436 5415

Indian, Himalayan & Southeast Asian Art

Hong Kong
Edward Wilkinson
+852 2918 4321
New York
Mark Rasmussen
+1 917 206 1688

Islamic & Indian Art

London
Oliver White
+44 20 7468 8303

Japanese Art

London
Suzannah Yip
+44 20 7468 8368
New York
Jeff Olson
+1 212 461 6516

Jewellery

London
Jean Ghika
+44 20 7468 8282
Emily Barber
+44 20 7468 8284

New York
Brett O'Connor
+1 212 461 6525

Caroline Morrissey
+1 212 644 9046
Leslie Roskind
+1 212 644 9035

Los Angeles
Emily Waterfall
+1 323 436 5426

San Francisco
Shannon Beck
+1 415 503 3306

Hong Kong
Anastasia Chao
+852 3607 0007

Ellen Sin
+852 3607 0017

Marine Art

London
Veronique Scorer
+44 20 7393 3962

Mechanical Music

London
Jon Baddeley
+44 20 7393 3872

**Modern & Contemporary
African Art**

London
Giles Peppiatt
+ 44 20 7468 8355
New York
Hayley Grundy
+1 917 206 1624

**Modern & Contemporary
Middle Eastern Art**

London
Nima Sagharchi
+44 20 7468 8342

**Modern & Contemporary
South Asian Art**

London
Tahmina Ghaffar
+44 207 468 8382

**Modern Decorative
Art + Design**

London
Mark Oliver
+44 20 7393 3856
New York
Benjamin Walker
+1 212 710 1306
Dan Tolson
+1 917 206 1611
Los Angeles
Jason Stein
+1 323 436 5466

Motor Cars

London
Tim Schofield
+44 20 7468 5804
New York
Rupert Banner
+1 212 461 6515
Eric Minoff
1 917 206 1630
Evan Ide
+1 917 340 4657
Los Angeles
Jakob Greisen
+1 415 503 3284
Michael Caimano
+1 929 666 2243
San Francisco
Mark Osborne
+1 415 503 3353
Europe
Philip Kantor
+32 476 879 471

Automobilia

London
Toby Wilson
+44 20 8963 2842
Adrian Papiros
+44 20 8963 2840

Motorcycles

London
Ben Walker
+44 20 8963 2819
James Stensel
+44 20 8963 2818
Los Angeles
Craig Mallery
+1 323 436 5470

Museum Services

San Francisco
Laura King Pfaff
+1 415 503 3210

Native American Art

Los Angeles
Ingmars Lindbergs
+1 415 503 3393
Kim Jarand
+1 323 436 5430

Natural History

Los Angeles
Claudia Florian
+1 323 436 5437
Thomas E. Lindgren
+1 310 469 8567 •

Old Master Pictures

London
Andrew Mckenzie
+44 20 7468 8261

Orientalist Art

London
Charles O'Brien
+44 20 7468 8360

Photography

New York
Laura Paterson
+1 917 206 1653

**Post-War and
Contemporary Art**

London
Ralph Taylor
+44 20 7447 7403
Giacomo Balsamo
+44 20 7468 5837
New York
Muys Snijders
+212 644 9020
Jacqueline Towers-Perkins
+1 212 644 9039
Lisa De Simone
+1 917 206 1607
Los Angeles
Sharon Squires
+1 323 436 5404
Laura Bjorstad
+1 323 436 5446

Prints and Multiples

London
Lucia Tro Santafe
+44 20 7468 8262
New York
Deborah Ripley
+1 212 644 9059
Los Angeles
Morisa Rosenberg
+1 323 436 5435

Russian Art

London
Daria Khristova
+44 20 7468 8334
New York
Yelena Harbick
+1 212 644 9136

Scientific Instruments

London
Jon Baddeley
+44 20 7393 3872
New York
Jonathan Snellenburg
+1 212 461 6530

Scottish Pictures

Edinburgh
Chris Brickley
+44 131 240 2297

Silver & Gold Boxes

London
Ellis Finch
+44 20 7393 3973

Sporting Guns

London
William Threlfall
+44 20 7393 3815

Space History

San Francisco
Adam Stackhouse
+1 415 503 3266

Travel Pictures

London
Veronique Scorer
+44 20 7393 3962

**Watches &
Wristwatches**

London
Jonathan Darracott
+44 20 7447 7412
New York
Jonathan Snellenburg
+1 212 461 6530
Hong Kong
Tim Bourne
+852 3607 0021

Whisky

Edinburgh
Martin Green
+44 131 225 2266
Hong Kong
Daniel Lam
+852 2918 4321

Wine

London
Richard Harvey
+44 20 7468 5811
San Francisco
Christine Ballard
+1 415 503 3221
Hong Kong
Daniel Lam
+852 2918 4321

Client Services Departments**U.S.A.**

San Francisco
(415) 861 7500
(415) 861 8951 fax
Monday - Friday, 9am to 5pm

Los Angeles

(323) 850 7500
(323) 850 6090 fax
Monday - Friday, 9am to 5pm

New York

(212) 644 9001
(212) 644 9009 fax
Monday - Friday, 9am to 5pm

Toll Free

(800) 223 2854

U.K.

Monday to Friday 8.30 to 6.00
+44 (0) 20 7447 7447

Bids

+44 (0) 20 7447 7447
+44 (0) 20 7447 7401 fax
To bid via the internet please visit
bonhams.com

• Indicates independent contractor

Bonhams Global Network

International Salerooms

London

101 New Bond Street
London W1S 1SR
+44 20 7447 7447
+44 20 7447 7400 fax

New York

580 Madison Avenue
New York, NY 10022
+1 (212) 644 9001
+1 (212) 644 9007 fax

Hong Kong

Suite 2001
One Pacific Place
88 Queensway
Admiralty
Hong Kong
+852 2918 4321
+852 2918 4320 fax

Offices and Associated Companies

Africa

Nigeria

Neil Coventry
+234 (0) 8110 033 792
+27 (0) 7611 20171
neil.coventry@
bonhams.com

South Africa - Johannesburg

Penny Culverwell
+27 (0) 71 342 2670
penny.culverwell@
bonhams.com

Australia

Sydney

97-99 Queen Street,
Woollahra, NSW 2025
Australia
+61 (0) 2 8412 2222
+61 (0) 2 9475 4110 fax
info.aus@bonhams.com

Melbourne

1130 High St
Armadale VIC 3143
Australia
+61 (0) 3 8640 4088
+61 (0) 2 9475 4110 fax
info.aus@bonhams.com

Asia

Beijing

Vivian Zhang
Unit S102A, Beijing
Lufthansa Center,
50 Liangmaqiao Road,
Chaoyang District,
Beijing 100125, China
+86 (0) 10 8424 3188
beijing@bonhams.com

Singapore

Bernadette Rankine
11th Floor, Wisma Atria
435 Orchard Road
Singapore 238877
+65 (0) 6701 8038
+65 (0) 6701 8001 fax
bernadette.rankine@
bonhams.com

Taiwan

Bobbie Hu
37th Floor,
Taipei 101 Tower
No. 7 Xinyi Road,
Section 5
Taipei, 100
+886 2 8758 2898
+886 2 8758 2897 fax
taiwan@bonhams.com

Europe

Austria

Thomas Kamm
thomas.kamm@
bonhams.com
+49 900 89 2420 5812
austria@bonhams.com

Belgium

Christine De Schaetzen
christine.deschaetzen@
bonhams.com
Boulevard Saint
Michel 101
1040 Brussels
+32 (0) 2 736 5076
belgium@bonhams.com

France

Catherine Yaiche
catherine.yaiche@
bonhams.com
4 rue de la Paix
75002 Paris
+33 (0) 1 42 61 10 10
paris@bonhams.com

Germany - Cologne

Katharina Schmid
katharina.schmid@
bonhams.com
+49 (0) 221 9865 3419
+49 (0) 157 9234 6717
cologne@bonhams.com

Germany - Munich

Thomas Kamm
thomas.kamm@
bonhams.com
Maximilianstrasse 52
80538 Munich
+49 (0) 89 2420 5812
munich@bonhams.com

Germany - Stuttgart

Katharina Schmid
katharina.schmid@
bonhams.com
Neue Brücke 2
New Bridge Offices
70173 Stuttgart
+49 (0) 711 2195 2640
+49 (0) 157 9234 6717
stuttgart@bonhams.com

Greece

7 Neofytou Vamva
Street
Athens 10674
+30 (0) 210 3636 404
athens@bonhams.com

Ireland

Kieran O'Boyle
kieran.oboyle@
bonhams.com
31 Molesworth Street
Dublin 2
+353 (0) 1 602 0990
ireland@bonhams.com

Italy - Milan

Luca Curradi
luca.curradi@
bonhams.com
Via Boccaccio 22
20123 Milano
+39 0 2 4953 9020
milan@bonhams.com

Italy - Rome

Emma Dalla Libera
emma.dallalibera@
bonhams.com
Via Sicilia 50
00187 Roma
+39 06 485 900
rome@bonhams.com

The Netherlands

Koen Samson
koen.samson@
bonhams.com
De Lairessestraat 154
1075 HL Amsterdam
+31 (0) 20 67 09 701
amsterdam@
bonhams.com

Portugal

Filipa De Andrade
filipa.deandrade@
bonhams.com
Rua Bartolomeu Dias
no160. 1o
Belem
1400-031 Lisbon
+351 218 293 291
portugal@bonhams.com

Spain - Barcelona & North

Teresa Ybarra
teresa.ybarra@
bonhams.com
+34 930 156 686
+34 680 347 606
barcelona@
bonhams.com

Spain - Madrid

Johann Leibbrandt
johann.leibbrandt@
bonhams.com
Núñez de Balboa
no 4-1C
28001 Madrid
+34 915 78 17 27

Switzerland - Geneva

Livie Gallone Moeller
livie.gallonemoeller@
bonhams.com
Rue Etienne-Dumont 10
1204 Geneva
+41 22 300 3160
geneva@bonhams.com

Switzerland - Zurich

Andrea Bodmer
andrea.bodmer@
bonhams.com
Dreikönigstrasse 31a
8002 Zürich
+41 44 281 9535
zurich@bonhams.com

North America

USA

Representatives:

Arizona

Terri Adrian-Hardy
terri.hardy@
bonhams.com
+1 (602) 859 1843
arizona@bonhams.com

California

Central Valley
David Daniel
david.daniel@
bonhams.com
+1 (916) 364 1645
nevada@bonhams.com

California - Palm Springs

Brooke Sivo
brooke.sivo@
bonhams.com
+1 (760) 350 4255
palmsprings@
bonhams.com

California - San Diego

Brooke Sivo
brooke.sivo@
bonhams.com
+1 (760) 567 1744
sandiego@
bonhams.com

Colorado

Lance Vigil
lance.vigil@
bonhams.com
+1 (720) 355 3737
colorado@
bonhams.com

Florida

April Matteini
april.matteini@
bonhams.com
+1 (305) 978 2459
Alexis Butler
alexis.butler@
bonhams.com
+1 (305) 878 5366
miami@bonhams.com

Georgia

Mary Moore Bethea
mary.bethea@
bonhams.com
+1 (404) 842 1500
georgia@bonhams.com

Illinois & Midwest

Natalie B. Waechter
natalie.waechter@
bonhams.com
+1 (773) 267 3300
Shawn Marsh
shawn.marsh@
bonhams.com
+1 (773) 680 2881
chicago@bonhams.com

Massachusetts & New England

Amy Corcoran
amy.corcoran@
bonhams.com
+1 (617) 742 0909
boston@bonhams.com

Nevada

David Daniel
david.daniel@
bonhams.com
+1 (775) 831 0330
nevada@bonhams.com

New Mexico

Terri Adrian-Hardy
terri.hardy@
bonhams.com
+1 (602) 859 1843
newmexico@
bonhams.com

Oregon & Idaho

Sheryl Acheson
sheryl.acheson@
bonhams.com
+1 (971) 727 7797
oregon@bonhams.com

Philadelphia – Pennsylvania

Caitlyn Pickens
caitlyn.pickens@
bonhams.com
+1 (267) 792 3172
philadelphia@
bonhams.com

London

Montpelier Street London
SW7 1HH
+44 20 7393 3900
+44 20 7393 3905 fax

Edinburgh

22 Queen Street
Edinburgh
EH2 1JX
+44 131 225 2266
+44 131 220 2547 fax

Los Angeles

7601 W. Sunset Boulevard
Los Angeles
CA 90046
+1 (323) 850 7500
+1 (323) 850 6090 fax

Texas - Dallas

Mary Holm
mary.holm@
bonhams.com
+1 (214) 557 2716
dallas@bonhams.com

Texas - Houston

Lindsay Davis
lindsay.davis@
bonhams.com
+1 (713) 855 7452
texas@bonhams.com

Virginia

Gertraud Hechl
gertraud.hechl@
bonhams.com
+1 (202) 422 2733
virginia@
bonhams.com

**Washington
& Alaska**

Heather O'Mahony
heather.omahony@
bonhams.com
+1 (206) 566 3913
seattle@
bonhams.com

**Washington DC
Mid-Atlantic Region**

Gertraud Hechl
gertraud.hechl@
bonhams.com
+1 (202) 422 2733
washingtonDC@
bonhams.com

Canada**Toronto, Ontario**

Kristin Kearney
340 King St East
2nd floor, Office 213
Toronto ON
M5A 1 KB
kristin.kearney@
bonhams.com
+1 (416) 462 9004
info.ca@
bonhams.com

Montreal, Quebec

+1 (514) 209 2377
info.ca@
bonhams.com

Middle East**Israel**

Joslynn Halibard
joslynn.halibard@
bonhams.com
+972 (0) 54 553 5337

**United
Kingdom****South East
England****Guildford**

Millmead,
Guildford,
Surrey GU2 4BE
+44 1483 504 030
guildford@
bonhams.com

Isle of Wight

+44 1273 220 000
isleofwight@
bonhams.com

Representative:

Brighton & Hove

Tim Squire-Sanders
+44 1273 220 000
hove@bonhams.com

West Sussex

+44 (0) 1273 220 000
sussex@
bonhams.com

**South West
England****Bath**

Queen Square House
Charlotte Street
Bath, BA1 2LL
+44 1225 788 988
bath@bonhams.com

Cornwall - Truro

36 Lemon Street
Truro
Cornwall
TR1 2NR
+44 1872 250 170
truro@bonhams.com

Exeter

The Lodge
Southernhay West
Exeter, Devon
EX1 1JG
+44 1392 425 264
exeter@bonhams.com

Tetbury

Eight Bells House
14 Church Street
Tetbury
Gloucestershire
GL8 8JG
+44 1666 502 200
tetbury_office@
bonhams.com

Representatives:

Dorset

Matthew Lacey
+44 1935 815 271

**East Anglia and
Bury St. Edmunds**

Michael Steel
+44 1284 716 190
bury@bonhams.com

Norfolk

The Market Place
Reepham
Norfolk, NR10 4JJ
+44 1603 871 443
norfolk@
bonhams.com

Midlands**Knowle**

The Old House
Station Road
Knowle, Solihull
West Midlands
B93 0HT
+44 1564 776 151
knowle@
bonhams.com

Oxford

Banbury Road
Shipton on Cherwell
Kidlington OX5 1JH
+44 1865 853 640
oxford@
bonhams.com

Bonhams MPH
The Guard House
Bicester Heritage
Bicester, Oxfordshire
OX26 5HA
+44 1869 229 477
mph@bonhams.com

**Yorkshire & North
East England****Leeds**

The West Wing
Bowcliffe Hall
Bramham
Leeds, LS23 6LP
+44 113 234 5755
leeds@bonhams.com

North West England**Chester**

2 St Johns Court
Vicars Lane
Chester, CH1 1QE
+44 1244 313 936
chester@
bonhams.com

Manchester

The Stables
213 Ashley Road
Hale, WA15 9TB
+44 161 927 3822
manchester@
bonhams.com

Channel Islands**Jersey**

La Chasse
La Rue de la Vallee
St Mary
Jersey, JE3 3DL
+44 1534 722 441
jersey@bonhams.com

Representative:

Guernsey

+44 1481 722 448
guernsey@
bonhams.com

Scotland**Bonhams West
of Scotland**

Kirkhill House
Broom Road East
Newton Mearns
Glasgow, G77 5LL
+44 141 223 8866
glasgow@
bonhams.com

Wales

Representatives:

Cardiff

Jeff Muse
+44 2920 727 980
cardiff@bonhams.com

Auction Registration Form

(Attendee / Absentee / Online / Telephone Bidding)

Please circle your bidding method above.

--	--	--	--

Paddle number (for office use only)

General Notice: This sale will be conducted in accordance with Bonhams Conditions of Sale, and your bidding and buying at the sale will be governed by such terms and conditions. Please read the Conditions of Sale in conjunction with the Buyer's Guide relating to this sale and other published notices and terms relating to bidding. Payment by personal or business check may result in your property not being released until purchase funds clear our bank. Checks must be drawn on a U.S. bank.

Notice to Absentee Bidders: In the table below, please provide details of the lots on which you wish to place bids at least 24 hours prior to the sale. Bids will be rounded down to the nearest increment. Please refer to the Buyer's Guide in the catalog for further information relating to instructions to Bonhams to execute absentee bids on your behalf. Bonhams will endeavor to execute bids on your behalf but will not be liable for any errors or non-executed bids.

Notice to First Time Bidders: New clients are requested to provide photographic proof of ID - passport, driving license, ID card, together with proof of address - utility bill, bank or credit card statement etc. Corporate clients should also provide a copy of their articles of association / company registration documents, together with a letter authorizing the individual to bid on the company's behalf. Failure to provide this may result in your bids not being processed. For higher value lots you may also be asked to provide a bankers reference.

Notice to online bidders: If you have forgotten your username and password for www.bonhams.com, please contact Client Services.

If successful

- I will collect the purchases myself
- Please contact me with a shipping quote (if applicable)
- I will arrange a third party to collect my purchase(s)

Please email or fax the completed Registration Form and requested information to:

Bonhams Client Services Department
580 Madison Avenue
New York, New York 10022
Tel +1 (212) 644 9001
Fax +1 (212) 644 9009
bids.us@bonhams.com

Bonhams

Sale title: Modern Decorative Art + Design		Sale date: December 13, 2019	
Sale no. 25459		Sale venue: New York	
General Bid Increments:			
\$10 - 200by 10s		\$10,000 - 20,000by 1,000s	
\$200 - 500by 20 / 50 / 80s		\$20,000 - 50,000by 2,000 / 5,000 / 8,000s	
\$500 - 1,000by 50s		\$50,000 - 100,000by 5,000s	
\$1,000 - 2,000by 100s		\$100,000 - 200,000by 10,000s	
\$2,000 - 5,000by 200 / 500 / 800s		above \$200,000at the auctioneer's discretion	
\$5,000 - 10,000by 500s		The auctioneer has discretion to split any bid at any time.	
Customer Number		Title	
First Name		Last Name	
Company name (to be invoiced if applicable)			
Address			
City		County / State	
Post / Zip code		Country	
Telephone mobile		Telephone daytime	
Telephone evening		Fax	
Telephone bidders: indicate primary and secondary contact numbers by writing ① or ② next to the telephone number.			
E-mail (in capitals) _____			
By providing your email address above, you authorize Bonhams to send you marketing materials and news concerning Bonhams and partner organizations. Bonhams does not sell or trade email addresses.			
I am registering to bid as a private client <input type="checkbox"/>		I am registering to bid as a trade client <input type="checkbox"/>	
Resale: please enter your resale license number here _____ We may contact you for additional information.			

SHIPPING	
Shipping Address (if different than above):	
Address: _____	Country: _____
City: _____	Post/ZIP code: _____

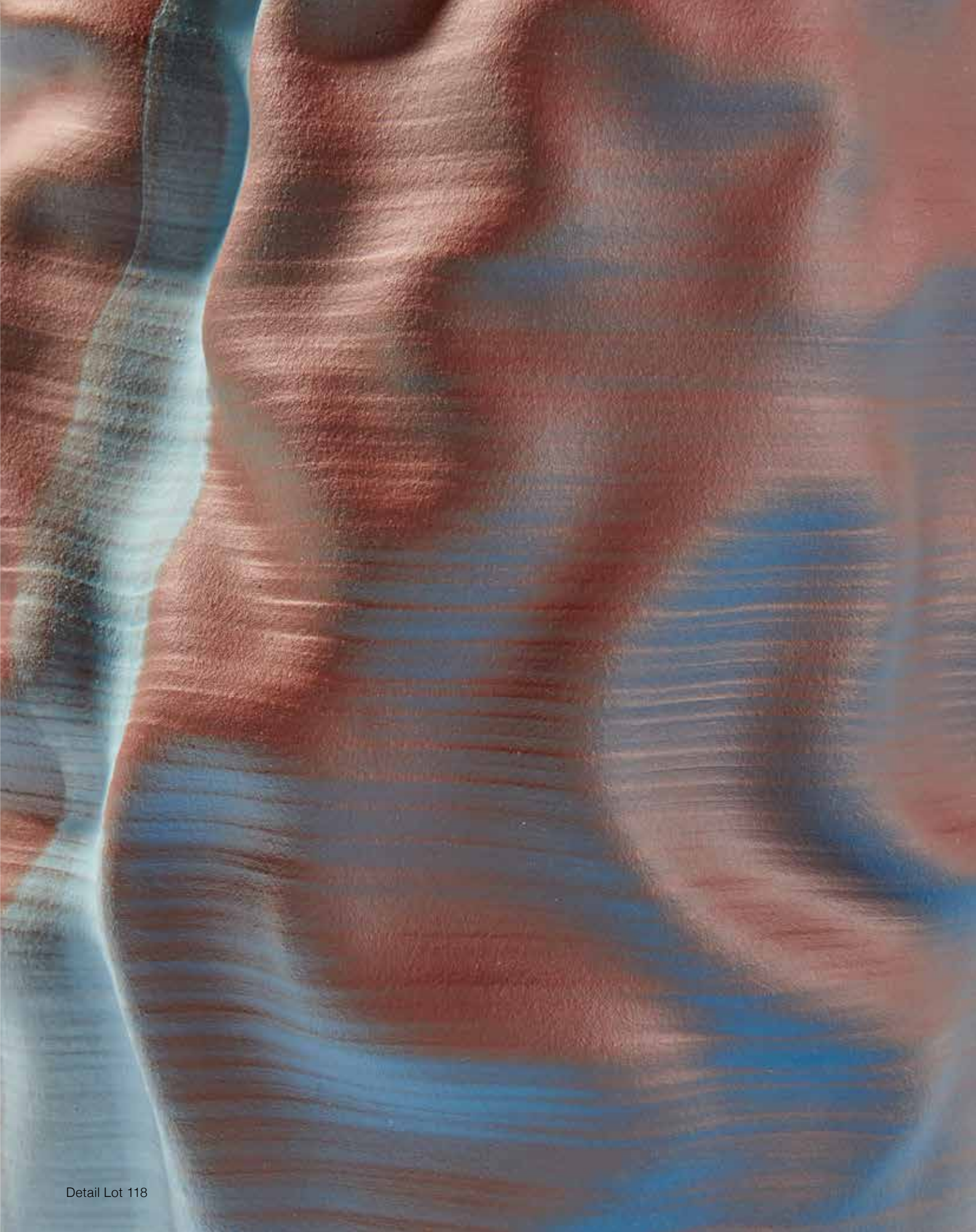
Please note that all telephone calls are recorded.

Type of bid (A-Absentee, T-Telephone)	Lot no.	Brief description (In the event of any discrepancy, lot number and not lot description will govern.) If you are bidding online there is no need to complete this section.	MAX bid in US\$ (excluding premium and applicable tax) Emergency bid for telephone bidders only*

You instruct us to execute each absentee bid up to the corresponding bid amount indicated above.

* Emergency Bid: A maximum bid (exclusive of Buyer's Premium and tax) to be executed by Bonhams only if we are unable to contact you by telephone or should the connection be lost during bidding.

BY SIGNING THIS FORM YOU AGREE THAT YOU HAVE READ AND UNDERSTAND OUR CONDITIONS OF SALE AND SHALL BE LEGALLY BOUND BY THEM, AND YOU AGREE TO PAY THE BUYER'S PREMIUM, ANY APPLICABLE TAXES, AND ANY OTHER CHARGES MENTIONED IN THE BUYER'S GUIDE OR CONDITIONS OF SALE. THIS AFFECTS YOUR LEGAL RIGHTS.	
Your signature:	Date:





Bonhams
580 Madison Avenue
New York, NY 10022

+1 212 644 9001
bonhams.com

AUCTIONEERS SINCE 1793